

Sample Name:

Acq. Operator : lida

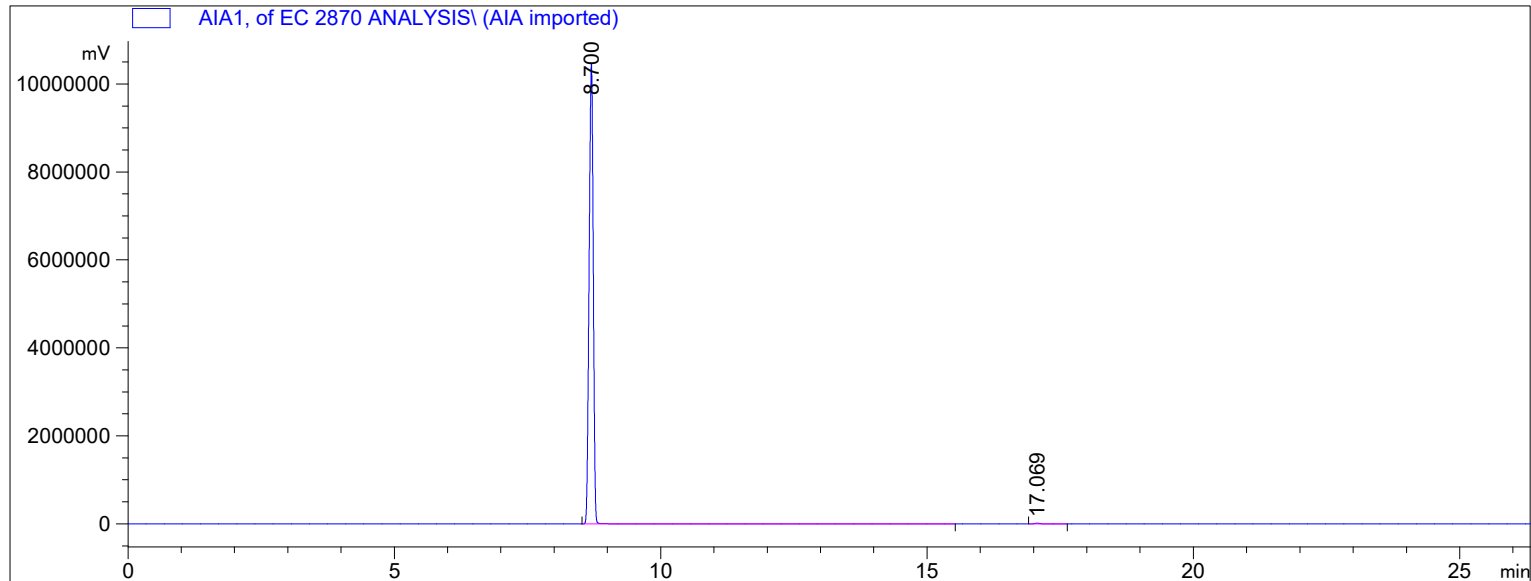
Location : Vial 2

Injection Date : 21.02.2022 18:10:10

Acq. Method :

Analysis Method : C:\CHEM32\1\METHODS\VALIDATION.M

Last changed : 21.09.2022 14:15:41



=====
 Area Percent Report
 =====

Sorted By : Signal
 Calib. Data Modified : 21 September 2022 r. 14:13:16
 Multiplier : 1.0000
 Dilution : 1.0000
 Use Multiplier & Dilution Factor with ISTDs

Signal 1: AIA1,

Peak #	RetTime [min]	Type	Width [min]	Area [mV*s]	Area %	Name
1	5.759		0.0000	0.00000	0.00000	acetaldehyde
2	7.453		0.0000	0.00000	0.00000	ethyl acetate
3	7.611		0.0000	0.00000	0.00000	acetal
4	8.059		0.0000	0.00000	0.00000	methanol
5	8.700	BB I	1.44e-3	3.76258e7	99.85775	ethanol
6	11.445		0.0000	0.00000	0.00000	butan-2-ol
7	12.049		0.0000	0.00000	0.00000	propan-1-ol
8	14.185		0.0000	0.00000	0.00000	2-methylpropan-1-ol
9	16.359		0.0000	0.00000	0.00000	butan-1-ol
10	17.069	BB I	1.36e-3	5.36000e4	0.14225	4-methylpentan-2-ol
11	18.835		0.0000	0.00000	0.00000	2-methylbutan-1-ol
12	19.045		0.0000	0.00000	0.00000	3-methylbutan-1-ol

Totals : 3.76794e7 100.0000

2 Warnings or Errors :

Warning : Calibration warnings (see calibration table listing)

Warning : Calibrated compound(s) not found

Sample Name:

Acq. Operator : lida

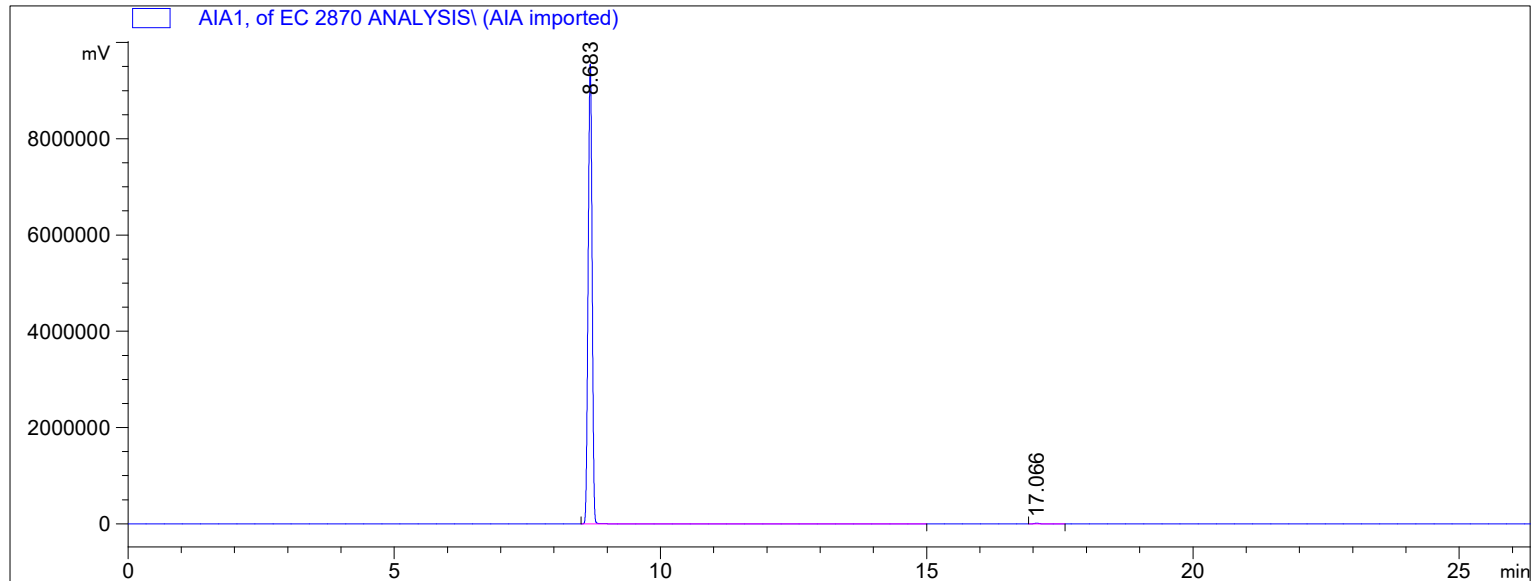
Location : Vial 2

Injection Date : 21.02.2022 18:42:39

Acq. Method :

Analysis Method : C:\CHEM32\1\METHODS\VALIDATION.M

Last changed : 21.09.2022 14:15:41



=====
 Area Percent Report
 =====

Sorted By : Signal
 Calib. Data Modified : 21 September 2022 r. 14:13:16
 Multiplier : 1.0000
 Dilution : 1.0000
 Use Multiplier & Dilution Factor with ISTDs

Signal 1: AIA1,

Peak #	RetTime [min]	Type	Width [min]	Area [mV*s]	Area %	Name
1	5.759		0.0000	0.00000	0.00000	acetaldehyde
2	7.453		0.0000	0.00000	0.00000	ethyl acetate
3	7.611		0.0000	0.00000	0.00000	acetal
4	8.059		0.0000	0.00000	0.00000	methanol
5	8.683	BB I	1.39e-3	3.29158e7	99.85735	ethanol
6	11.445		0.0000	0.00000	0.00000	butan-2-ol
7	12.049		0.0000	0.00000	0.00000	propan-1-ol
8	14.185		0.0000	0.00000	0.00000	2-methylpropan-1-ol
9	16.359		0.0000	0.00000	0.00000	butan-1-ol
10	17.066	BB I	1.37e-3	4.70229e4	0.14265	4-methylpentan-2-ol
11	18.835		0.0000	0.00000	0.00000	2-methylbutan-1-ol
12	19.045		0.0000	0.00000	0.00000	3-methylbutan-1-ol

Totals : 3.29628e7 100.0000

2 Warnings or Errors :

Warning : Calibration warnings (see calibration table listing)

Warning : Calibrated compound(s) not found

Sample Name:

Acq. Operator : lida

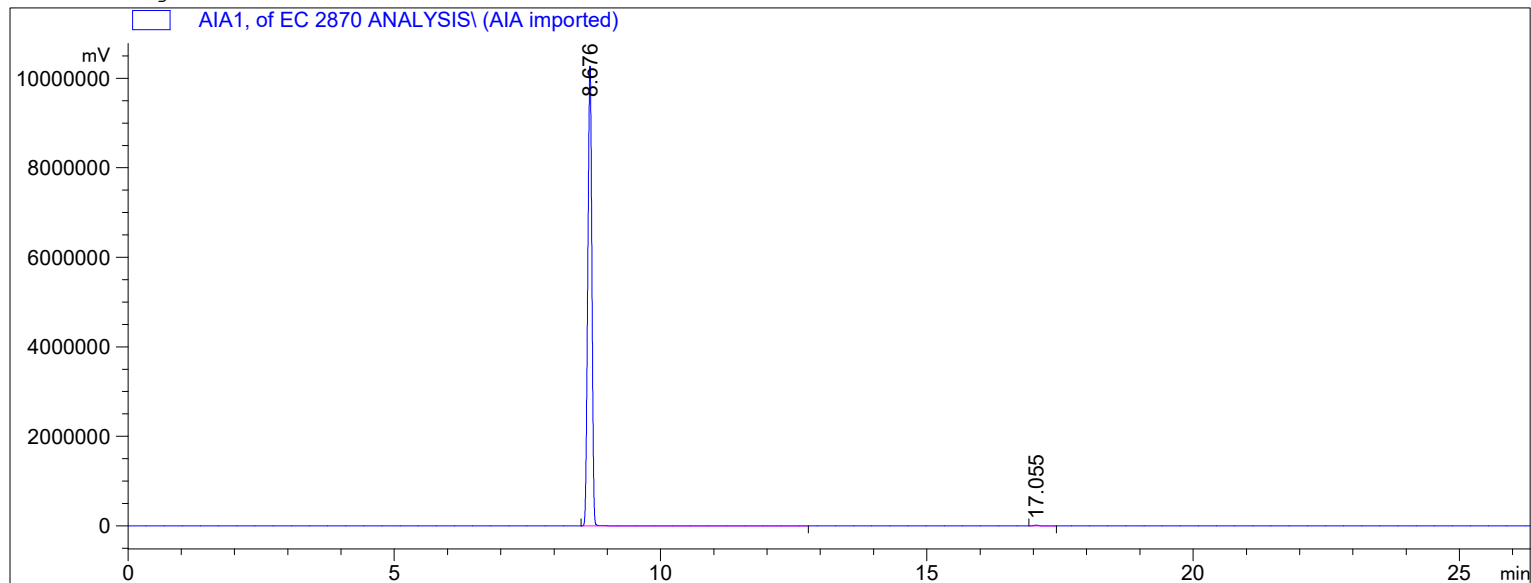
Location : Vial 2

Injection Date : 21.02.2022 19:15:13

Acq. Method :

Analysis Method : C:\CHEM32\1\METHODS\VALIDATION.M

Last changed : 21.09.2022 14:15:41



=====
 Area Percent Report
 =====

Sorted By : Signal
 Calib. Data Modified : 21 September 2022 r. 14:13:16
 Multiplier : 1.0000
 Dilution : 1.0000
 Use Multiplier & Dilution Factor with ISTDs

Signal 1: AIA1,

Peak #	RetTime [min]	Type	Width [min]	Area [mV*s]	Area %	Name
1	5.759		0.0000	0.00000	0.00000	acetaldehyde
2	7.453		0.0000	0.00000	0.00000	ethyl acetate
3	7.611		0.0000	0.00000	0.00000	acetal
4	8.059		0.0000	0.00000	0.00000	methanol
5	8.676	BB I	1.43e-3	3.66247e7	99.85748	ethanol
6	11.445		0.0000	0.00000	0.00000	butan-2-ol
7	12.049		0.0000	0.00000	0.00000	propan-1-ol
8	14.185		0.0000	0.00000	0.00000	2-methylpropan-1-ol
9	16.359		0.0000	0.00000	0.00000	butan-1-ol
10	17.055	BB I	1.37e-3	5.22720e4	0.14252	4-methylpentan-2-ol
11	18.835		0.0000	0.00000	0.00000	2-methylbutan-1-ol
12	19.045		0.0000	0.00000	0.00000	3-methylbutan-1-ol

Totals : 3.66770e7 100.0000

2 Warnings or Errors :

Warning : Calibration warnings (see calibration table listing)

Warning : Calibrated compound(s) not found

Sample Name:

Acq. Operator : lida

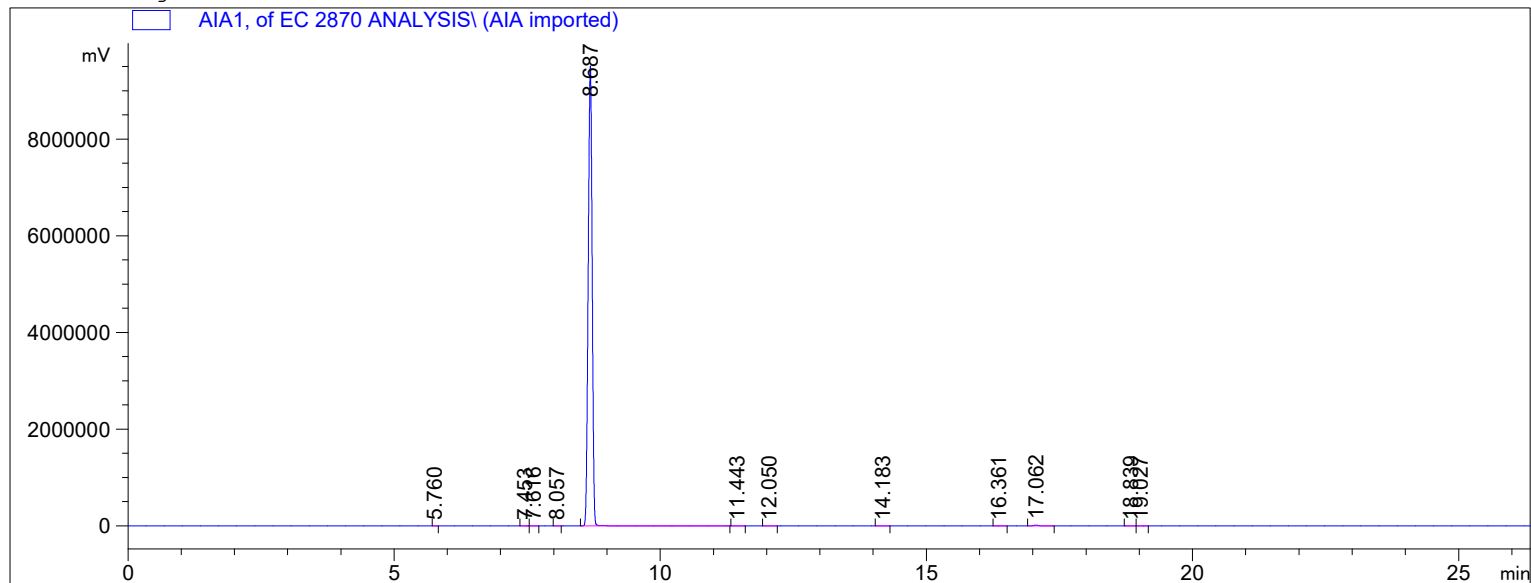
Location : Vial 3

Injection Date : 21.02.2022 19:47:46

Acq. Method :

Analysis Method : C:\CHEM32\1\METHODS\VALIDATION.M

Last changed : 21.09.2022 14:15:41



=====
 Area Percent Report
 =====

Sorted By : Signal
 Calib. Data Modified : 21 September 2022 r. 14:13:16
 Multiplier : 1.0000
 Dilution : 1.0000
 Use Multiplier & Dilution Factor with ISTDs

Signal 1: AIA1,

Peak #	RetTime [min]	Type	Width [min]	Area [mV*s]	Area %	Name
1	5.760	BB	5.33e-4	1888.35754	0.00574	acetaldehyde
2	7.453	BB	9.22e-4	2182.75879	0.00664	ethyl acetate
3	7.616	BB	9.00e-4	2467.14282	0.00750	acetal
4	8.057	BB	7.44e-4	2185.22754	0.00664	methanol
5	8.687	BB I	1.39e-3	3.28089e7	99.75828	ethanol
6	11.443	BB	1.36e-3	3633.38013	0.01105	butan-2-ol
7	12.050	BB	1.36e-3	3461.56616	0.01053	propan-1-ol
8	14.183	BB	1.32e-3	4136.00586	0.01258	2-methylpropan-1-ol
9	16.361	BB	1.29e-3	3815.68579	0.01160	butan-1-ol
10	17.062	BB I	1.36e-3	4.72838e4	0.14377	4-methylpentan-2-ol
11	18.839	BB	1.29e-3	4266.62061	0.01297	2-methylbutan-1-ol
12	19.027	BB	1.29e-3	4177.66943	0.01270	3-methylbutan-1-ol

Totals : 3.28884e7 100.0000

1 Warnings or Errors :

Warning : Calibration warnings (see calibration table listing)

=====
 *** End of Report ***

Sample Name:

Acq. Operator : lida

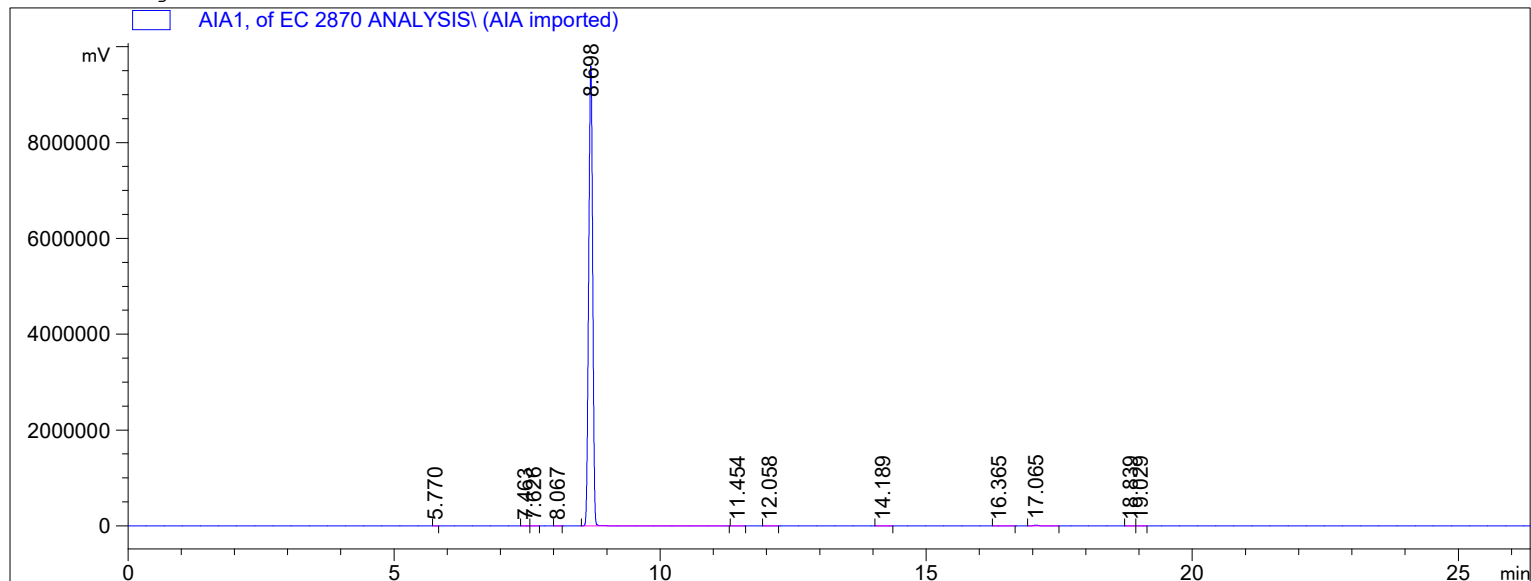
Location : Vial 3

Injection Date : 21.02.2022 20:20:20

Acq. Method :

Analysis Method : C:\CHEM32\1\METHODS\VALIDATION.M

Last changed : 21.09.2022 14:15:41



=====
 Area Percent Report
 =====

Sorted By : Signal
 Calib. Data Modified : 21 September 2022 r. 14:13:16
 Multiplier : 1.0000
 Dilution : 1.0000
 Use Multiplier & Dilution Factor with ISTDs

Signal 1: AIA1,

Peak #	RetTime [min]	Type	Width [min]	Area [mV*s]	Area %	Name
1	5.770	BB	5.22e-4	1915.03772	0.00575	acetaldehyde
2	7.463	BB	9.33e-4	2184.72632	0.00656	ethyl acetate
3	7.626	BB	9.00e-4	2555.67505	0.00767	acetal
4	8.067	BB	7.44e-4	2217.06885	0.00665	methanol
5	8.698	BB I	1.40e-3	3.32345e7	99.75774	ethanol
6	11.454	BB	1.37e-3	3673.94263	0.01103	butan-2-ol
7	12.058	BB	1.36e-3	3523.80371	0.01058	propan-1-ol
8	14.189	BB	1.33e-3	4235.27881	0.01271	2-methylpropan-1-ol
9	16.365	BB	1.28e-3	3935.57397	0.01181	butan-1-ol
10	17.065	BB I	1.37e-3	4.79970e4	0.14407	4-methylpentan-2-ol
11	18.839	BB	1.28e-3	4293.26758	0.01289	2-methylbutan-1-ol
12	19.029	BB	1.28e-3	4178.86816	0.01254	3-methylbutan-1-ol

Totals : 3.33152e7 100.0000

1 Warnings or Errors :

Warning : Calibration warnings (see calibration table listing)

=====
 *** End of Report ***

Sample Name:

Acq. Operator : lida

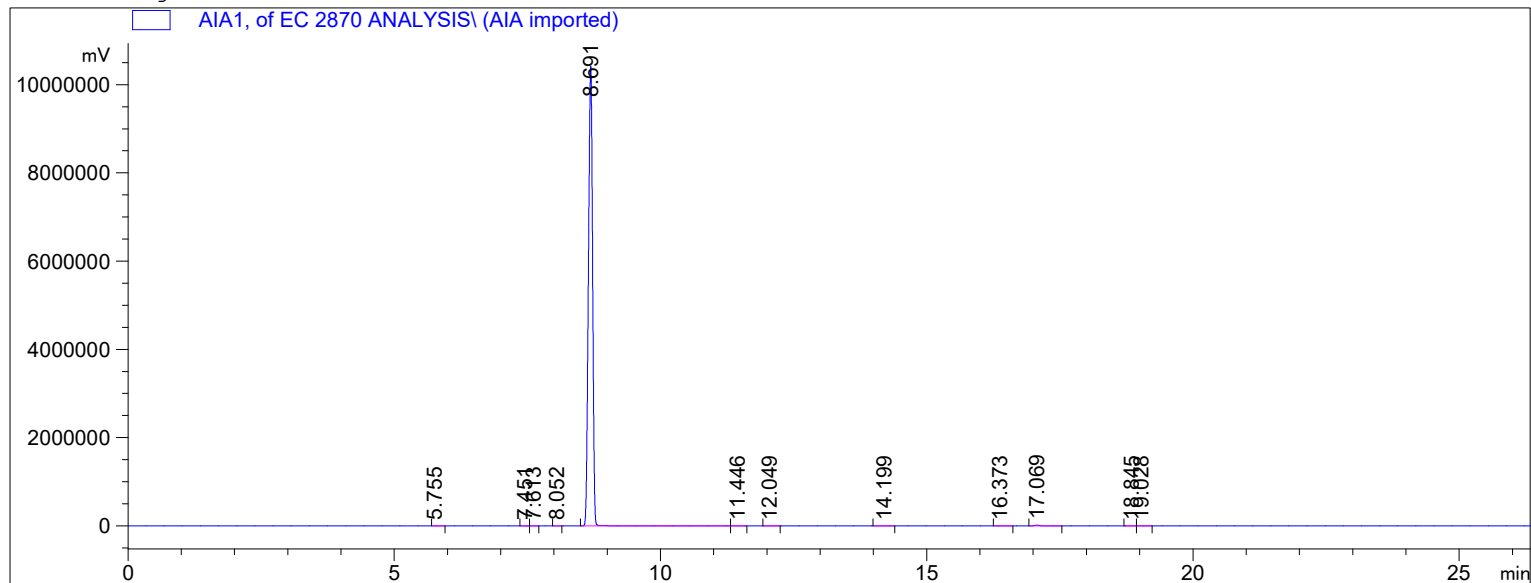
Location : Vial 3

Injection Date : 21.02.2022 20:52:49

Acq. Method :

Analysis Method : C:\CHEM32\1\METHODS\VALIDATION.M

Last changed : 21.09.2022 14:15:41



=====
 Area Percent Report
 =====

Sorted By : Signal
 Calib. Data Modified : 21 September 2022 r. 14:13:16
 Multiplier : 1.0000
 Dilution : 1.0000
 Use Multiplier & Dilution Factor with ISTDs

Signal 1: AIA1,

Peak #	RetTime [min]	Type	Width [min]	Area [mV*s]	Area %	Name
1	5.755	BB	5.33e-4	2169.19116	0.00577	acetaldehyde
2	7.451	BB	9.22e-4	2424.52661	0.00645	ethyl acetate
3	7.613	BB	8.89e-4	2858.41602	0.00760	acetal
4	8.052	BB	7.33e-4	2505.63306	0.00666	methanol
5	8.691	BB I	1.44e-3	3.75063e7	99.75900	ethanol
6	11.446	BB	1.37e-3	4164.01611	0.01108	butan-2-ol
7	12.049	BB	1.36e-3	3970.72852	0.01056	propan-1-ol
8	14.199	BB	1.32e-3	4769.27100	0.01269	2-methylpropan-1-ol
9	16.373	BB	1.28e-3	4375.79199	0.01164	butan-1-ol
10	17.069	BB I	1.37e-3	5.37279e4	0.14290	4-methylpentan-2-ol
11	18.845	BB	1.28e-3	4853.75586	0.01291	2-methylbutan-1-ol
12	19.028	BB	1.28e-3	4790.28906	0.01274	3-methylbutan-1-ol

Totals : 3.75969e7 100.0000

1 Warnings or Errors :

Warning : Calibration warnings (see calibration table listing)

=====
 *** End of Report ***

Sample Name:

Acq. Operator : lida

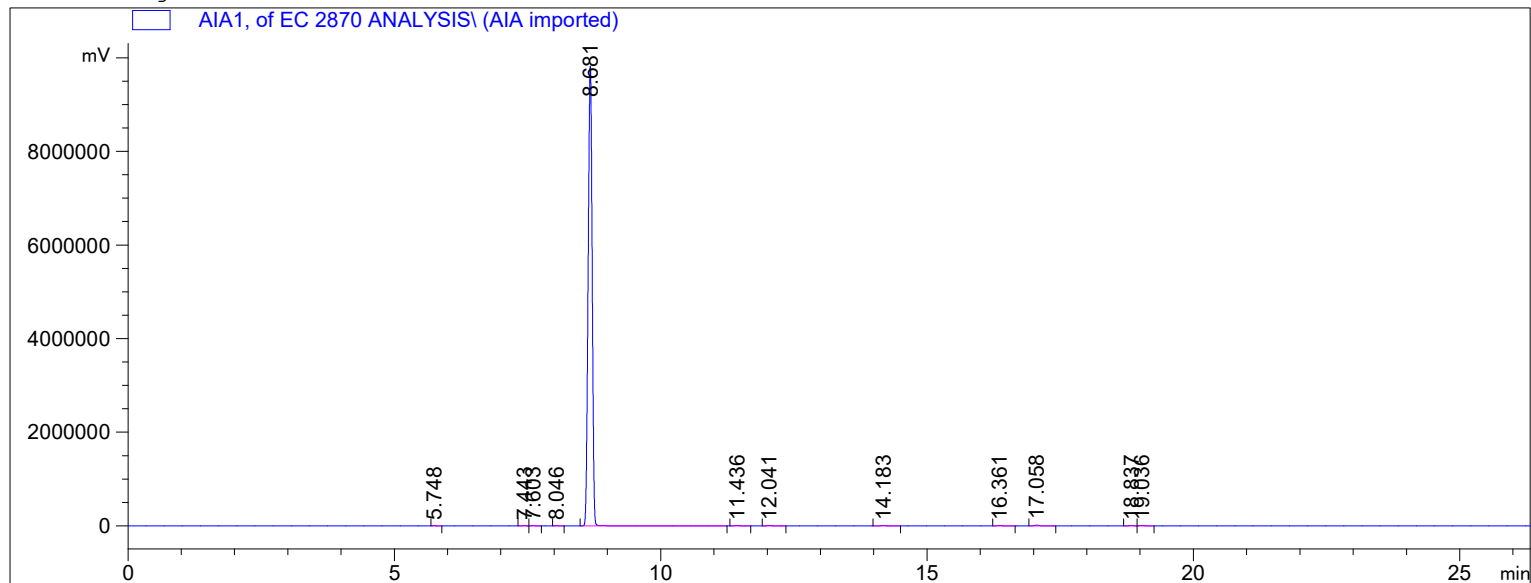
Location : Vial 4

Injection Date : 21.02.2022 21:25:15

Acq. Method :

Analysis Method : C:\CHEM32\1\METHODS\VALIDATION.M

Last changed : 21.09.2022 14:15:41



=====
 Area Percent Report
 =====

Sorted By : Signal
 Calib. Data Modified : 21 September 2022 r. 14:13:16
 Multiplier : 1.0000
 Dilution : 1.0000
 Use Multiplier & Dilution Factor with ISTDs

Signal 1: AIA1,

Peak #	RetTime [min]	Type	Width [min]	Area [mV*s]	Area %	Name
1	5.748	BB	5.33e-4	1.05106e4	0.03049	acetaldehyde
2	7.443	BB	9.22e-4	1.13467e4	0.03291	ethyl acetate
3	7.603	BB	9.00e-4	1.34393e4	0.03898	acetal
4	8.046	BB	7.33e-4	1.05490e4	0.03060	methanol
5	8.681	BB I	1.41e-3	3.42553e7	99.35899	ethanol
6	11.436	BB	1.36e-3	1.95775e4	0.05679	butan-2-ol
7	12.041	BB	1.36e-3	1.84562e4	0.05353	propan-1-ol
8	14.183	BB	1.32e-3	2.24088e4	0.06500	2-methylpropan-1-ol
9	16.361	BB	1.28e-3	2.02033e4	0.05860	butan-1-ol
10	17.058	BB I	1.37e-3	5.00972e4	0.14531	4-methylpentan-2-ol
11	18.837	BB	1.28e-3	2.24104e4	0.06500	2-methylbutan-1-ol
12	19.036	BB	1.28e-3	2.19986e4	0.06381	3-methylbutan-1-ol

Totals : 3.44762e7 100.0000

1 Warnings or Errors :

Warning : Calibration warnings (see calibration table listing)

=====
 *** End of Report ***

Sample Name:

Acq. Operator : lida

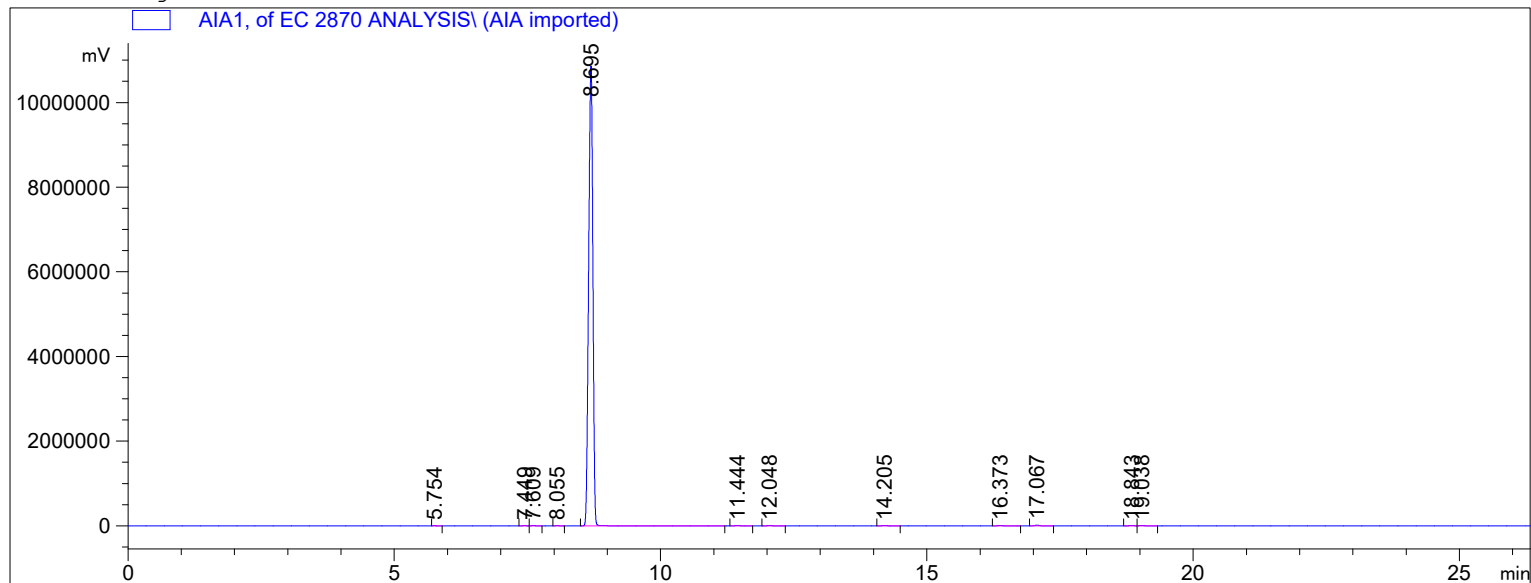
Location : Vial 4

Injection Date : 21.02.2022 21:57:45

Acq. Method :

Analysis Method : C:\CHEM32\1\METHODS\VALIDATION.M

Last changed : 21.09.2022 14:15:41



Sorted By : Signal
 Calib. Data Modified : 21 September 2022 r. 14:13:16
 Multiplier : 1.0000
 Dilution : 1.0000
 Use Multiplier & Dilution Factor with ISTDs

Signal 1: AIA1,

Peak #	RetTime [min]	Type	Width [min]	Area [mV*s]	Area %	Name
1	5.754	BB	5.22e-4	1.14875e4	0.02859	acetaldehyde
2	7.449	BB	9.22e-4	1.29301e4	0.03218	ethyl acetate
3	7.609	BB	8.78e-4	1.55717e4	0.03875	acetal
4	8.055	BB	7.33e-4	1.22864e4	0.03057	methanol
5	8.695	BB I	1.49e-3	3.99330e7	99.36905	ethanol
6	11.444	BB	1.34e-3	2.23288e4	0.05556	butan-2-ol
7	12.048	BB	1.33e-3	2.14688e4	0.05342	propan-1-ol
8	14.205	BB	1.31e-3	2.53621e4	0.06311	2-methylpropan-1-ol
9	16.373	BB	1.28e-3	2.37102e4	0.05900	butan-1-ol
10	17.067	BB I	1.36e-3	5.66487e4	0.14096	4-methylpentan-2-ol
11	18.843	BB	1.28e-3	2.60897e4	0.06492	2-methylbutan-1-ol
12	19.038	BB	1.28e-3	2.56721e4	0.06388	3-methylbutan-1-ol

Totals : 4.01866e7 100.0000

1 Warnings or Errors :

Warning : Calibration warnings (see calibration table listing)

*** End of Report ***

Sample Name:

Acq. Operator : lida

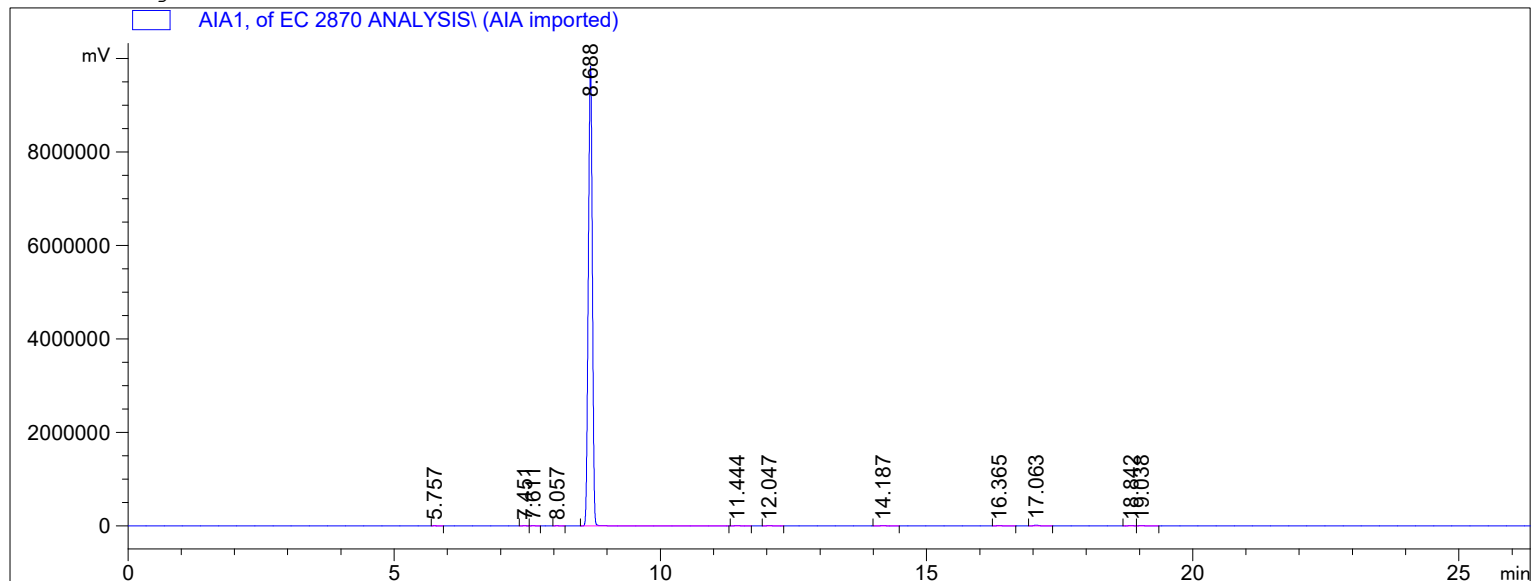
Location : Vial 4

Injection Date : 21.02.2022 22:30:10

Acq. Method :

Analysis Method : C:\CHEM32\1\METHODS\VALIDATION.M

Last changed : 21.09.2022 14:15:41



=====
 Area Percent Report
 =====

Sorted By : Signal
 Calib. Data Modified : 21 September 2022 r. 14:13:16
 Multiplier : 1.0000
 Dilution : 1.0000
 Use Multiplier & Dilution Factor with ISTDs

Signal 1: AIA1,

Peak #	RetTime [min]	Type	Width [min]	Area [mV*s]	Area %	Name
1	5.757	BB	5.33e-4	9989.33398	0.02894	acetaldehyde
2	7.451	BB	9.22e-4	1.14561e4	0.03319	ethyl acetate
3	7.611	BB	9.00e-4	1.34652e4	0.03901	acetal
4	8.057	BB	7.33e-4	1.05889e4	0.03067	methanol
5	8.688	BB I	1.41e-3	3.42999e7	99.35993	ethanol
6	11.444	BB	1.37e-3	1.96678e4	0.05697	butan-2-ol
7	12.047	BB	1.36e-3	1.84145e4	0.05334	propan-1-ol
8	14.187	BB	1.32e-3	2.24427e4	0.06501	2-methylpropan-1-ol
9	16.365	BB	1.28e-3	2.02006e4	0.05852	butan-1-ol
10	17.063	BB I	1.36e-3	5.02521e4	0.14557	4-methylpentan-2-ol
11	18.842	BB	1.28e-3	2.24022e4	0.06489	2-methylbutan-1-ol
12	19.038	BB	1.28e-3	2.20773e4	0.06395	3-methylbutan-1-ol

Totals : 3.45208e7 100.0000

1 Warnings or Errors :

Warning : Calibration warnings (see calibration table listing)

=====
 *** End of Report ***

Sample Name:

Acq. Operator : lida

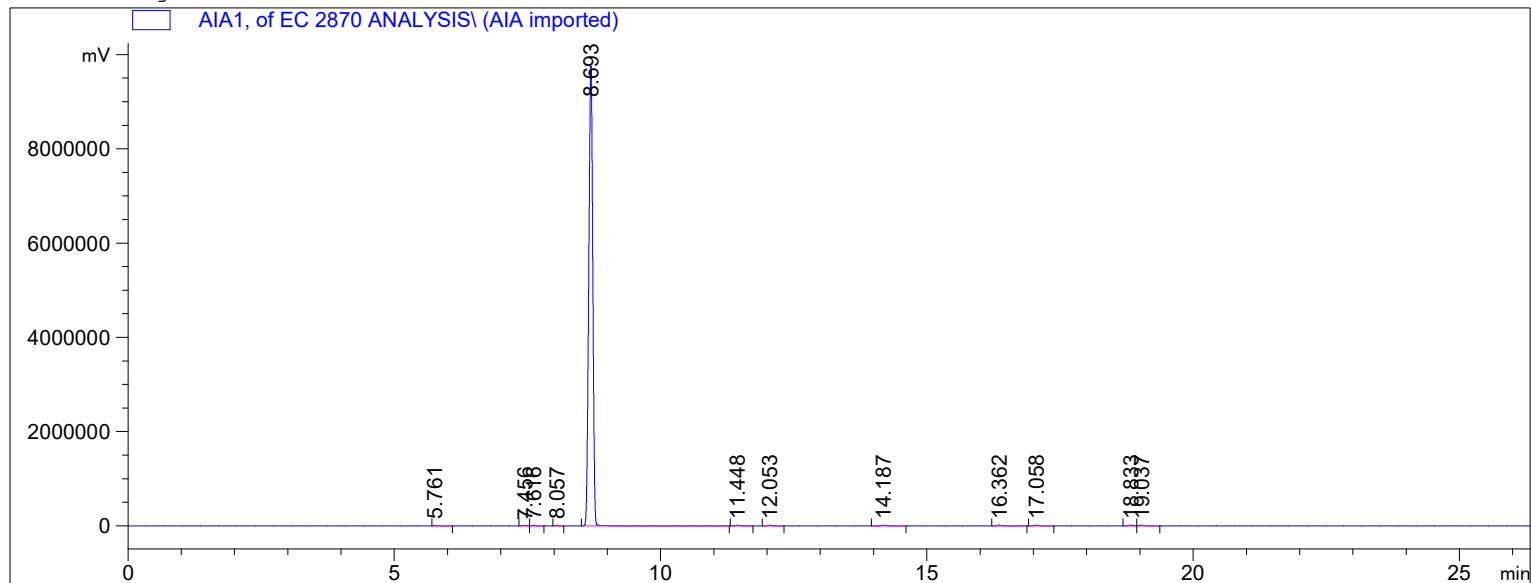
Location : Vial 5

Injection Date : 21.02.2022 23:02:36

Acq. Method :

Analysis Method : C:\CHEM32\1\METHODS\VALIDATION.M

Last changed : 21.09.2022 14:15:41



=====
 Area Percent Report
 =====

Sorted By : Signal
 Calib. Data Modified : 21 September 2022 r. 14:13:16
 Multiplier : 1.0000
 Dilution : 1.0000
 Use Multiplier & Dilution Factor with ISTDs

Signal 1: AIA1,

Peak #	RetTime [min]	Type	Width [min]	Area [mV*s]	Area %	Name
1	5.761	BB	5.33e-4	1.94637e4	0.05642	acetaldehyde
2	7.456	BB	9.22e-4	2.21508e4	0.06421	ethyl acetate
3	7.616	BB	8.89e-4	2.66707e4	0.07731	acetal
4	8.057	BB	7.33e-4	2.06446e4	0.05984	methanol
5	8.693	BB I	1.40e-3	3.41141e7	98.88643	ethanol
6	11.448	BB	1.34e-3	3.79881e4	0.11012	butan-2-ol
7	12.053	BB	1.34e-3	3.63408e4	0.10534	propan-1-ol
8	14.187	BB	1.32e-3	4.37287e4	0.12676	2-methylpropan-1-ol
9	16.362	BB	1.28e-3	4.02775e4	0.11675	butan-1-ol
10	17.058	BB I	1.36e-3	4.88235e4	0.14152	4-methylpentan-2-ol
11	18.833	BB	1.27e-3	4.43939e4	0.12868	2-methylbutan-1-ol
12	19.037	BB	1.27e-3	4.36813e4	0.12662	3-methylbutan-1-ol

Totals : 3.44983e7 100.0000

1 Warnings or Errors :

Warning : Calibration warnings (see calibration table listing)

=====
 *** End of Report ***

Sample Name:

Acq. Operator : lida

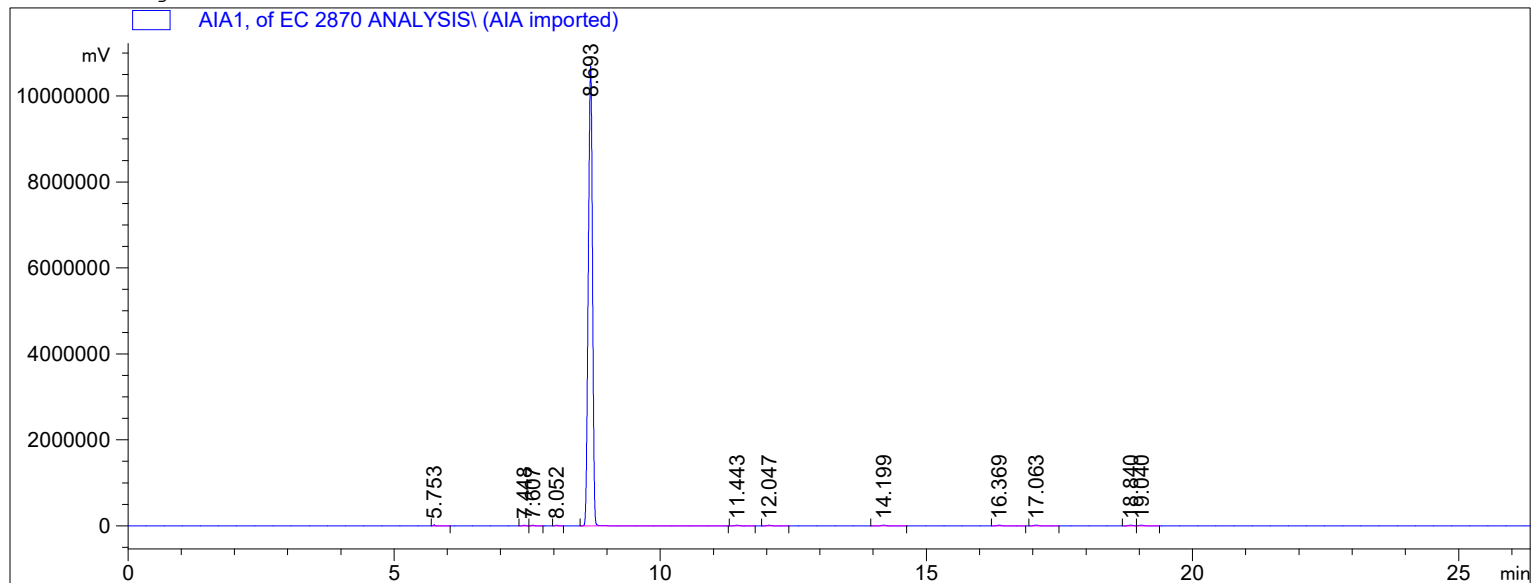
Location : Vial 5

Injection Date : 21.02.2022 23:35:05

Acq. Method :

Analysis Method : C:\CHEM32\1\METHODS\VALIDATION.M

Last changed : 21.09.2022 14:15:41



=====
 Area Percent Report
 =====

Sorted By : Signal
 Calib. Data Modified : 21 September 2022 r. 14:13:16
 Multiplier : 1.0000
 Dilution : 1.0000
 Use Multiplier & Dilution Factor with ISTDs

Signal 1: AIA1,

Peak #	RetTime [min]	Type	Width [min]	Area [mV*s]	Area %	Name
1	5.753	BB	5.22e-4	2.23809e4	0.05667	acetaldehyde
2	7.448	BB	9.11e-4	2.56800e4	0.06502	ethyl acetate
3	7.607	BB	8.78e-4	3.04171e4	0.07702	acetal
4	8.052	BB	7.33e-4	2.35971e4	0.05975	methanol
5	8.693	BB I	1.47e-3	3.90535e7	98.88750	ethanol
6	11.443	BB	1.36e-3	4.35796e4	0.11035	butan-2-ol
7	12.047	BB	1.33e-3	4.16187e4	0.10538	propan-1-ol
8	14.199	BB	1.32e-3	5.00185e4	0.12665	2-methylpropan-1-ol
9	16.369	BB	1.28e-3	4.59246e4	0.11629	butan-1-ol
10	17.063	BB I	1.36e-3	5.58622e4	0.14145	4-methylpentan-2-ol
11	18.840	BB	1.28e-3	5.05700e4	0.12805	2-methylbutan-1-ol
12	19.040	BB	1.28e-3	4.97081e4	0.12587	3-methylbutan-1-ol

Totals : 3.94928e7 100.0000

1 Warnings or Errors :

Warning : Calibration warnings (see calibration table listing)

=====
 *** End of Report ***

Sample Name:

Acq. Operator : lida

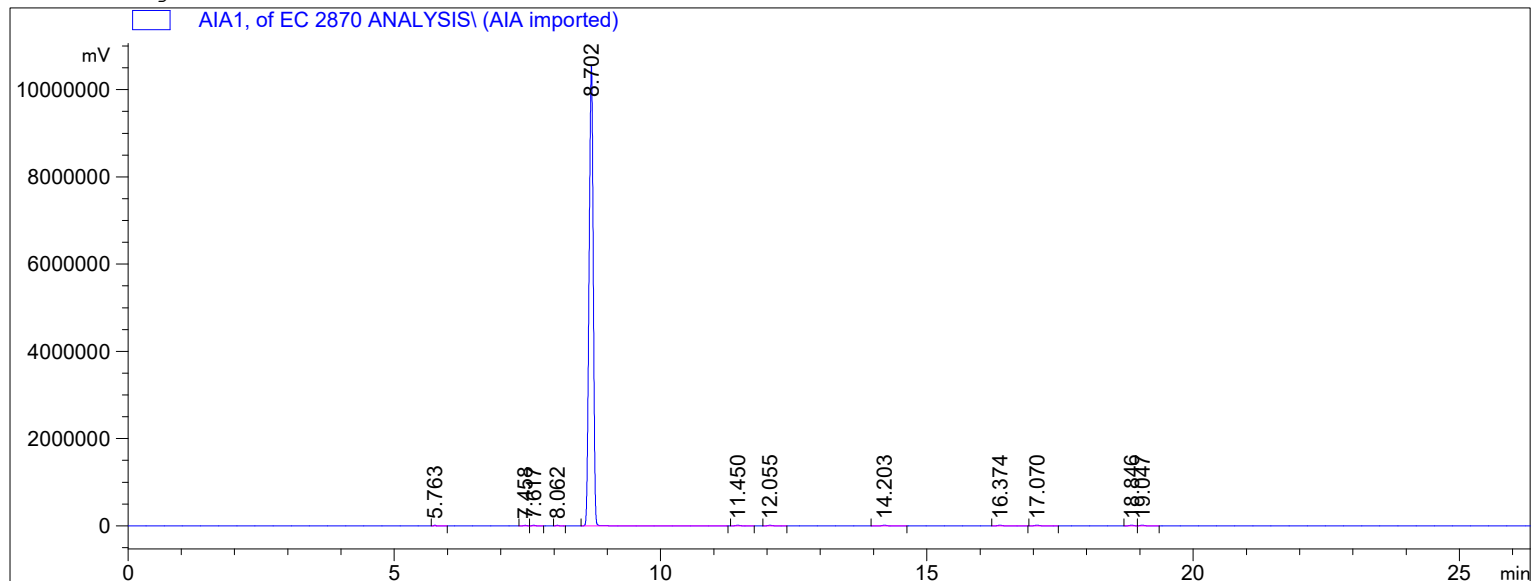
Location : Vial 5

Injection Date : 22.02.2022 0:07:31

Acq. Method :

Analysis Method : C:\CHEM32\1\METHODS\VALIDATION.M

Last changed : 21.09.2022 14:15:41



=====
 Area Percent Report
 =====

Sorted By : Signal
 Calib. Data Modified : 21 September 2022 r. 14:13:16
 Multiplier : 1.0000
 Dilution : 1.0000
 Use Multiplier & Dilution Factor with ISTDs

Signal 1: AIA1,

Peak #	RetTime [min]	Type	Width [min]	Area [mV*s]	Area %	Name
1	5.763	BB	5.22e-4	2.18565e4	0.05667	acetaldehyde
2	7.458	BB	9.22e-4	2.51788e4	0.06528	ethyl acetate
3	7.617	BB	8.78e-4	2.97411e4	0.07711	acetal
4	8.062	BB	7.22e-4	2.31421e4	0.06000	methanol
5	8.702	BB I	1.47e-3	3.81391e7	98.88613	ethanol
6	11.450	BB	1.36e-3	4.25658e4	0.11036	butan-2-ol
7	12.055	BB	1.32e-3	4.05962e4	0.10526	propan-1-ol
8	14.203	BB	1.32e-3	4.89546e4	0.12693	2-methylpropan-1-ol
9	16.374	BB	1.28e-3	4.49081e4	0.11644	butan-1-ol
10	17.070	BB I	1.36e-3	5.46637e4	0.14173	4-methylpentan-2-ol
11	18.846	BB	1.28e-3	4.94018e4	0.12809	2-methylbutan-1-ol
12	19.047	BB	1.28e-3	4.85973e4	0.12600	3-methylbutan-1-ol

Totals : 3.85687e7 100.0000

1 Warnings or Errors :

Warning : Calibration warnings (see calibration table listing)

=====
 *** End of Report ***

Sample Name:

Acq. Operator : lida

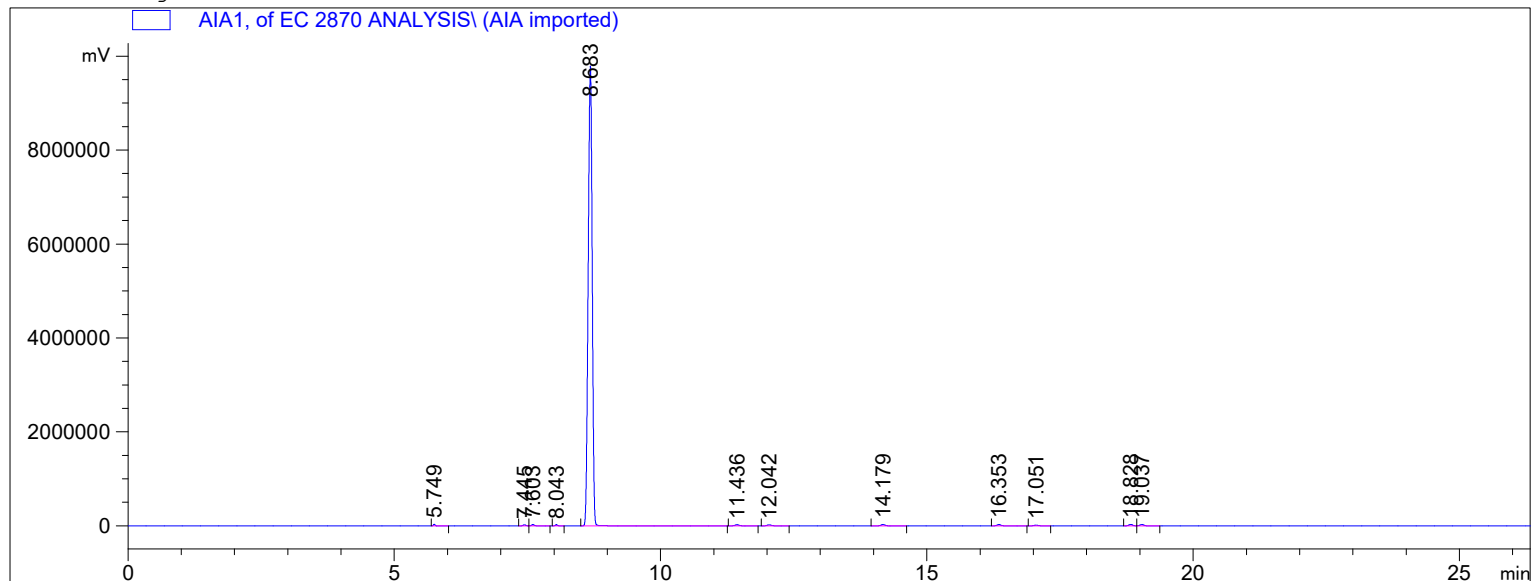
Location : Vial 6

Injection Date : 22.02.2022 0:39:57

Acq. Method :

Analysis Method : C:\CHEM32\1\METHODS\VALIDATION.M

Last changed : 21.09.2022 14:15:41



=====
 Area Percent Report
 =====

Sorted By : Signal
 Calib. Data Modified : 21 September 2022 r. 14:13:16
 Multiplier : 1.0000
 Dilution : 1.0000
 Use Multiplier & Dilution Factor with ISTDs

Signal 1: AIA1,

Peak #	RetTime [min]	Type	Width [min]	Area [mV*s]	Area %	Name
1	5.749	BB	5.33e-4	4.05363e4	0.11602	acetaldehyde
2	7.445	BB	9.22e-4	4.65325e4	0.13318	ethyl acetate
3	7.603	BB	9.00e-4	5.29525e4	0.15155	acetal
4	8.043	BB	7.33e-4	4.11422e4	0.11775	methanol
5	8.683	BB I	1.40e-3	3.42125e7	97.91811	ethanol
6	11.436	BB	1.36e-3	7.73050e4	0.22125	butan-2-ol
7	12.042	BB	1.33e-3	7.34043e4	0.21009	propan-1-ol
8	14.179	BB	1.32e-3	8.85442e4	0.25342	2-methylpropan-1-ol
9	16.353	BB	1.28e-3	8.08835e4	0.23149	butan-1-ol
10	17.051	BB I	1.36e-3	4.96773e4	0.14218	4-methylpentan-2-ol
11	18.828	BB	1.28e-3	8.88680e4	0.25435	2-methylbutan-1-ol
12	19.037	BB	1.28e-3	8.75659e4	0.25062	3-methylbutan-1-ol

Totals : 3.49399e7 100.0000

1 Warnings or Errors :

Warning : Calibration warnings (see calibration table listing)

=====
 *** End of Report ***

Sample Name:

Acq. Operator : lida

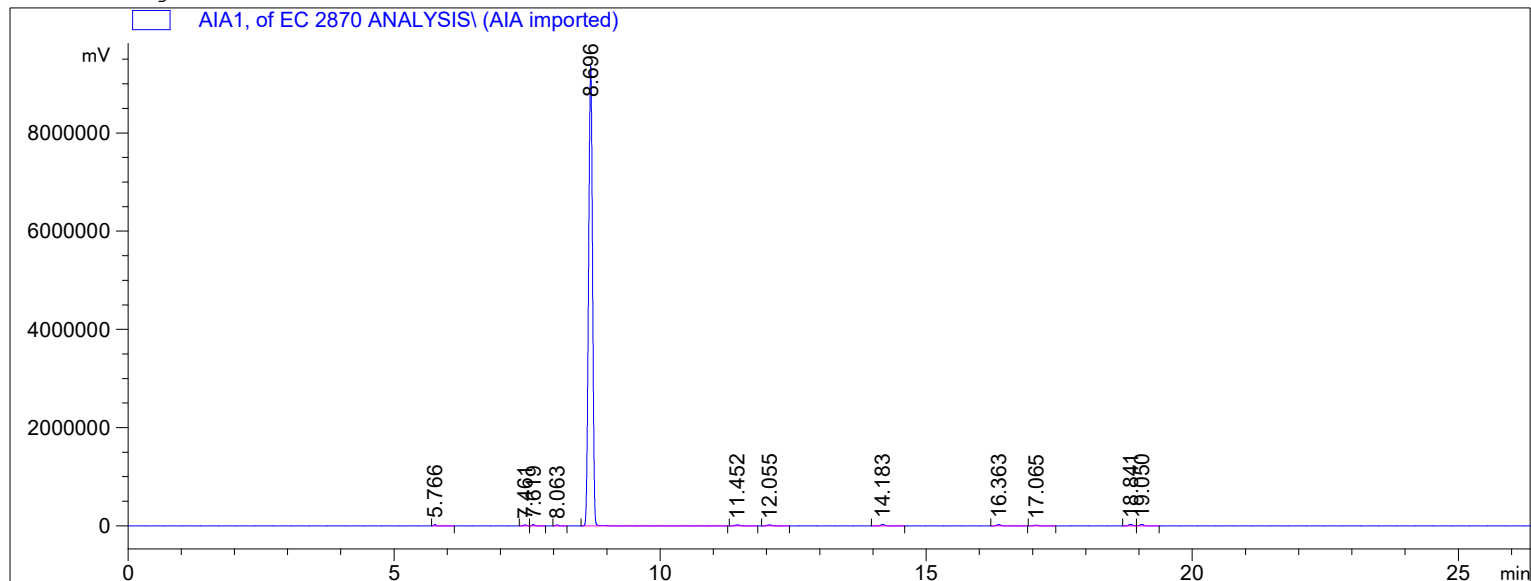
Location : Vial 6

Injection Date : 22.02.2022 1:12:22

Acq. Method :

Analysis Method : C:\CHEM32\1\METHODS\VALIDATION.M

Last changed : 21.09.2022 14:15:41



Sorted By : Signal
 Calib. Data Modified : 21 September 2022 r. 14:13:16
 Multiplier : 1.0000
 Dilution : 1.0000
 Use Multiplier & Dilution Factor with ISTDs

Signal 1: AIA1,

Peak #	RetTime [min]	Type	Width [min]	Area [mV*s]	Area %	Name
1	5.766	BB	5.33e-4	3.67142e4	0.11206	acetaldehyde
2	7.461	BB	9.22e-4	4.21207e4	0.12856	ethyl acetate
3	7.619	BB	9.00e-4	4.93003e4	0.15048	acetal
4	8.063	BB	7.33e-4	3.83021e4	0.11691	methanol
5	8.696	BB I	1.38e-3	3.20806e7	97.91925	ethanol
6	11.452	BB	1.36e-3	7.29642e4	0.22271	butan-2-ol
7	12.055	BB	1.36e-3	6.89718e4	0.21052	propan-1-ol
8	14.183	BB	1.33e-3	8.35429e4	0.25500	2-methylpropan-1-ol
9	16.363	BB	1.27e-3	7.61229e4	0.23235	butan-1-ol
10	17.065	BB I	1.36e-3	4.71516e4	0.14392	4-methylpentan-2-ol
11	18.841	BB	1.27e-3	8.39148e4	0.25613	2-methylbutan-1-ol
12	19.050	BB	1.27e-3	8.25948e4	0.25210	3-methylbutan-1-ol

Totals : 3.27623e7 100.0000

1 Warnings or Errors :

Warning : Calibration warnings (see calibration table listing)

*** End of Report ***

Sample Name:

Acq. Operator : lida

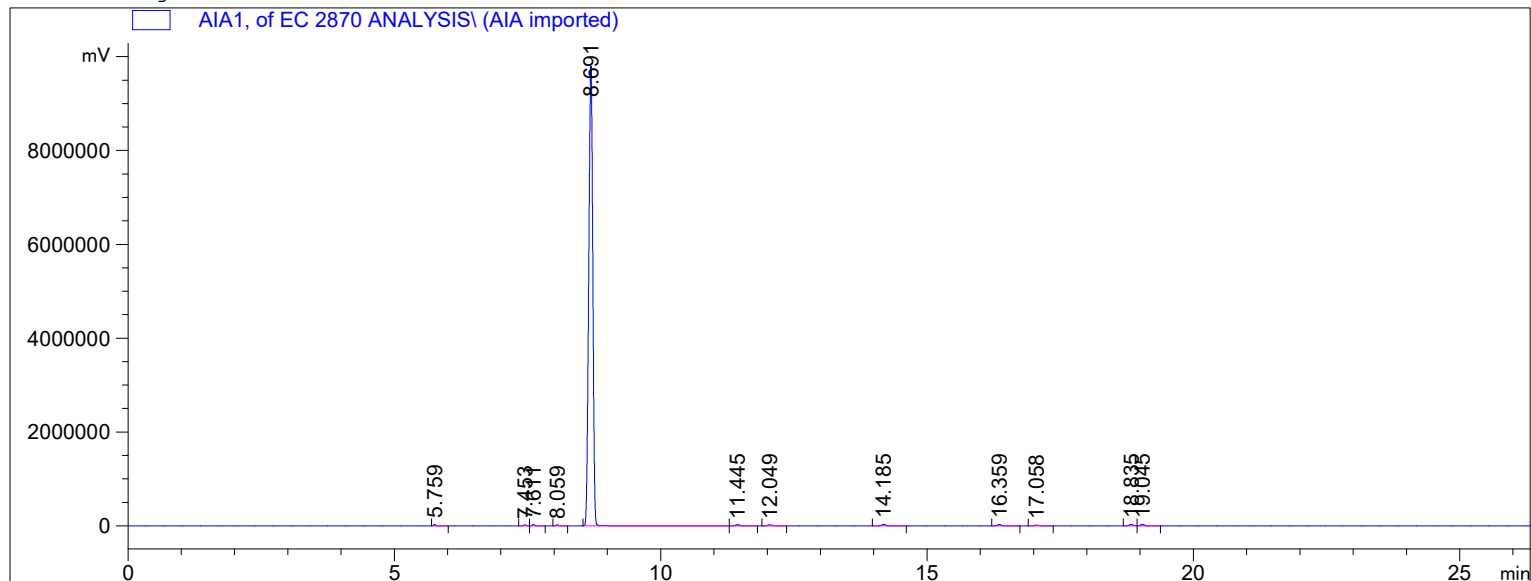
Location : Vial 6

Injection Date : 22.02.2022 1:44:48

Acq. Method :

Analysis Method : C:\CHEM32\1\METHODS\VALIDATION.M

Last changed : 21.09.2022 14:15:41



=====
 Area Percent Report
 =====

Sorted By : Signal
 Calib. Data Modified : 21 September 2022 r. 14:13:16
 Multiplier : 1.0000
 Dilution : 1.0000
 Use Multiplier & Dilution Factor with ISTDs

Signal 1: AIA1,

Peak #	RetTime [min]	Type	Width [min]	Area [mV*s]	Area %	Name
1	5.759	BB	5.33e-4	3.98487e4	0.11362	acetaldehyde
2	7.453	BB	9.11e-4	4.48728e4	0.12794	ethyl acetate
3	7.611	BB	8.89e-4	5.30057e4	0.15113	acetal
4	8.059	BB	7.33e-4	4.09291e4	0.11670	methanol
5	8.691	BB I	1.41e-3	3.43455e7	97.92589	ethanol
6	11.445	BB	1.34e-3	7.72159e4	0.22016	butan-2-ol
7	12.049	BB	1.33e-3	7.36840e4	0.21009	propan-1-ol
8	14.185	BB	1.32e-3	8.85765e4	0.25255	2-methylpropan-1-ol
9	16.359	BB	1.28e-3	8.13880e4	0.23205	butan-1-ol
10	17.058	BB I	1.37e-3	4.97042e4	0.14172	4-methylpentan-2-ol
11	18.835	BB	1.28e-3	8.98862e4	0.25628	2-methylbutan-1-ol
12	19.045	BB	1.28e-3	8.83406e4	0.25188	3-methylbutan-1-ol

Totals : 3.50730e7 100.0000

1 Warnings or Errors :

Warning : Calibration warnings (see calibration table listing)

=====
 *** End of Report ***