

Sample Name:

Acq. Operator : lida

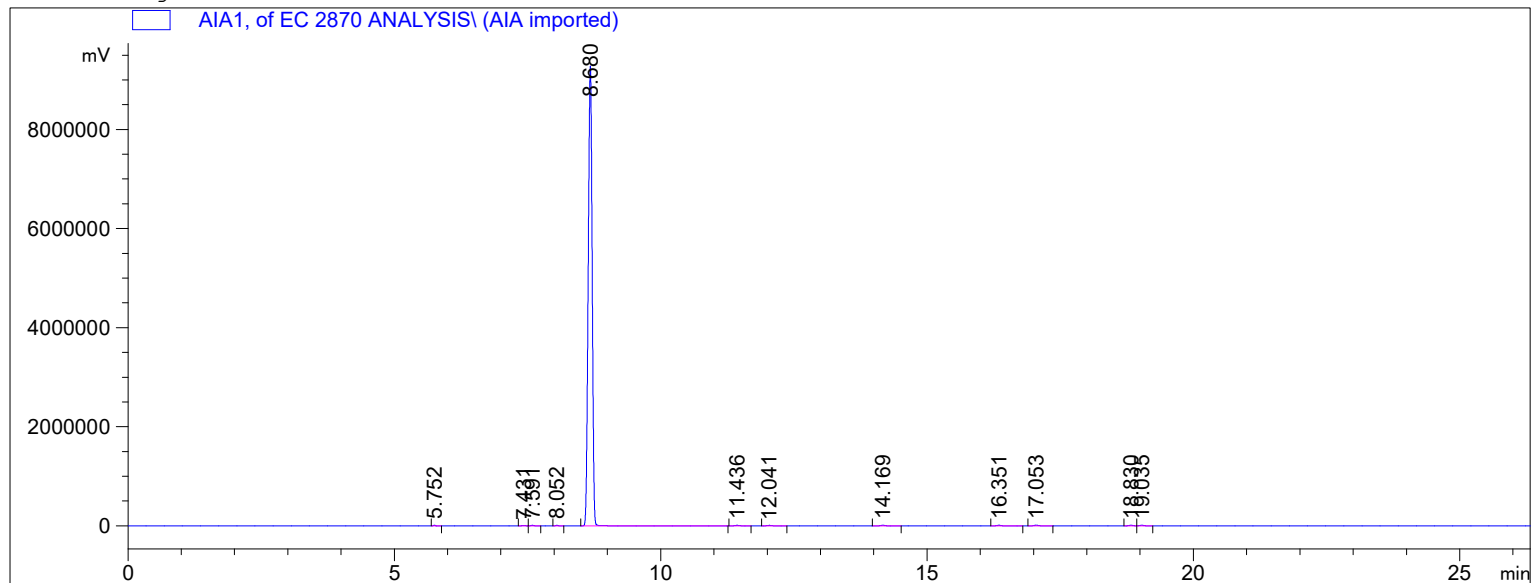
Location : Vial 1

Injection Date : 22.02.2022 2:17:12

Acq. Method :

Analysis Method : C:\CHEM32\1\METHODS\VALIDATION.M

Last changed : 21.09.2022 14:15:41



=====
 Area Percent Report
 =====

Sorted By : Signal
 Calib. Data Modified : 21 September 2022 r. 14:13:16
 Multiplier : 1.0000
 Dilution : 1.0000
 Use Multiplier & Dilution Factor with ISTDs

Signal 1: AIA1,

Peak #	RetTime [min]	Type	Width [min]	Area [mV*s]	Area %	Name
1	5.752	BB	5.44e-4	1.65528e4	0.05160	acetaldehyde
2	7.431	BB	9.22e-4	1.88745e4	0.05884	ethyl acetate
3	7.591	BB	9.11e-4	2.23466e4	0.06966	acetal
4	8.052	BB	7.44e-4	1.74232e4	0.05432	methanol
5	8.680	BB I	1.38e-3	3.17509e7	98.98110	ethanol
6	11.436	BB	1.36e-3	3.20276e4	0.09984	butan-2-ol
7	12.041	BB	1.36e-3	3.06740e4	0.09562	propan-1-ol
8	14.169	BB	1.32e-3	3.71017e4	0.11566	2-methylpropan-1-ol
9	16.351	BB	1.28e-3	3.38483e4	0.10552	butan-1-ol
10	17.053	BB I	1.36e-3	4.41380e4	0.13760	4-methylpentan-2-ol
11	18.830	BB	1.28e-3	3.72936e4	0.11626	2-methylbutan-1-ol
12	19.035	BB	1.28e-3	3.65596e4	0.11397	3-methylbutan-1-ol

Totals : 3.20777e7 100.0000

1 Warnings or Errors :

Warning : Calibration warnings (see calibration table listing)

=====
 *** End of Report ***

Sample Name:

Acq. Operator : lida

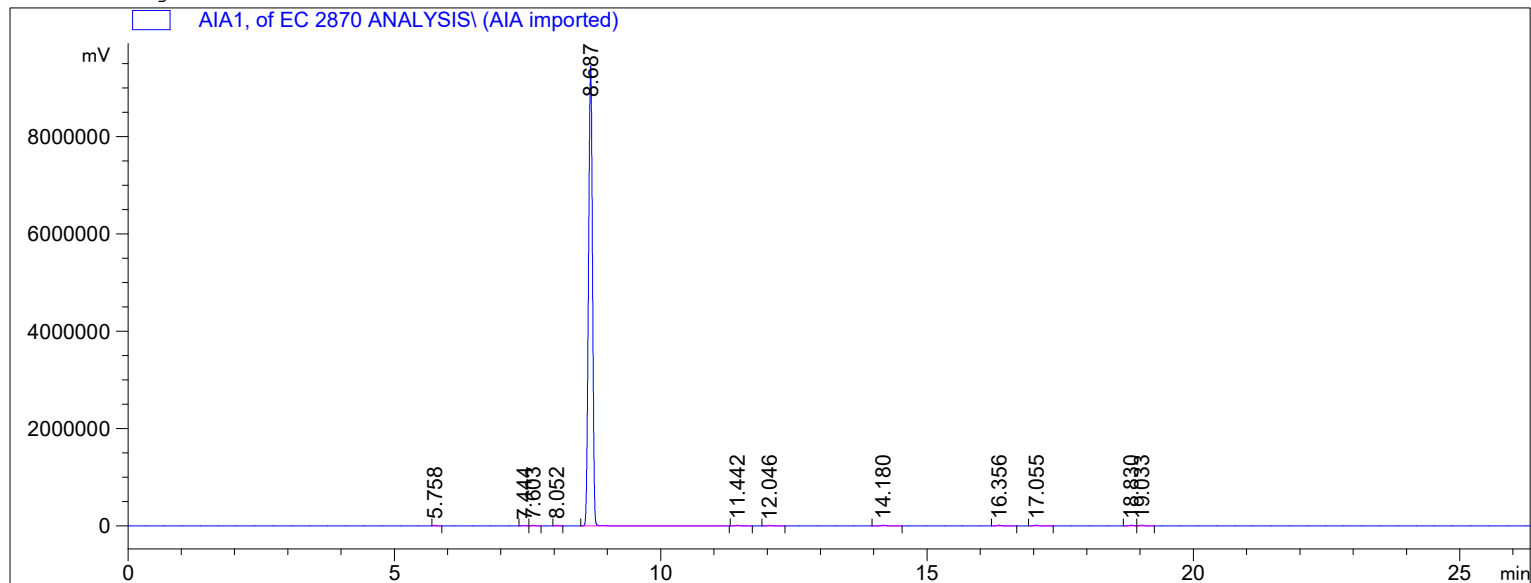
Location : Vial 1

Injection Date : 22.02.2022 2:48:36

Acq. Method :

Analysis Method : C:\CHEM32\1\METHODS\VALIDATION.M

Last changed : 21.09.2022 14:15:41



=====
 Area Percent Report
 =====

Sorted By : Signal
 Calib. Data Modified : 21 September 2022 r. 14:13:16
 Multiplier : 1.0000
 Dilution : 1.0000
 Use Multiplier & Dilution Factor with ISTDs

Signal 1: AIA1,

Peak #	RetTime [min]	Type	Width [min]	Area [mV*s]	Area %	Name
1	5.758	BB	5.44e-4	1.68671e4	0.05114	acetaldehyde
2	7.444	BB	9.22e-4	1.93535e4	0.05868	ethyl acetate
3	7.603	BB	9.00e-4	2.29583e4	0.06961	acetal
4	8.052	BB	7.44e-4	1.78583e4	0.05414	methanol
5	8.687	BB I	1.39e-3	3.26478e7	98.98489	ethanol
6	11.442	BB	1.36e-3	3.27779e4	0.09938	butan-2-ol
7	12.046	BB	1.34e-3	3.15281e4	0.09559	propan-1-ol
8	14.180	BB	1.31e-3	3.77338e4	0.11441	2-methylpropan-1-ol
9	16.356	BB	1.29e-3	3.48649e4	0.10571	butan-1-ol
10	17.055	BB I	1.37e-3	4.46324e4	0.13532	4-methylpentan-2-ol
11	18.830	BB	1.28e-3	3.84778e4	0.11666	2-methylbutan-1-ol
12	19.033	BB	1.28e-3	3.77573e4	0.11448	3-methylbutan-1-ol

Totals : 3.29826e7 100.0000

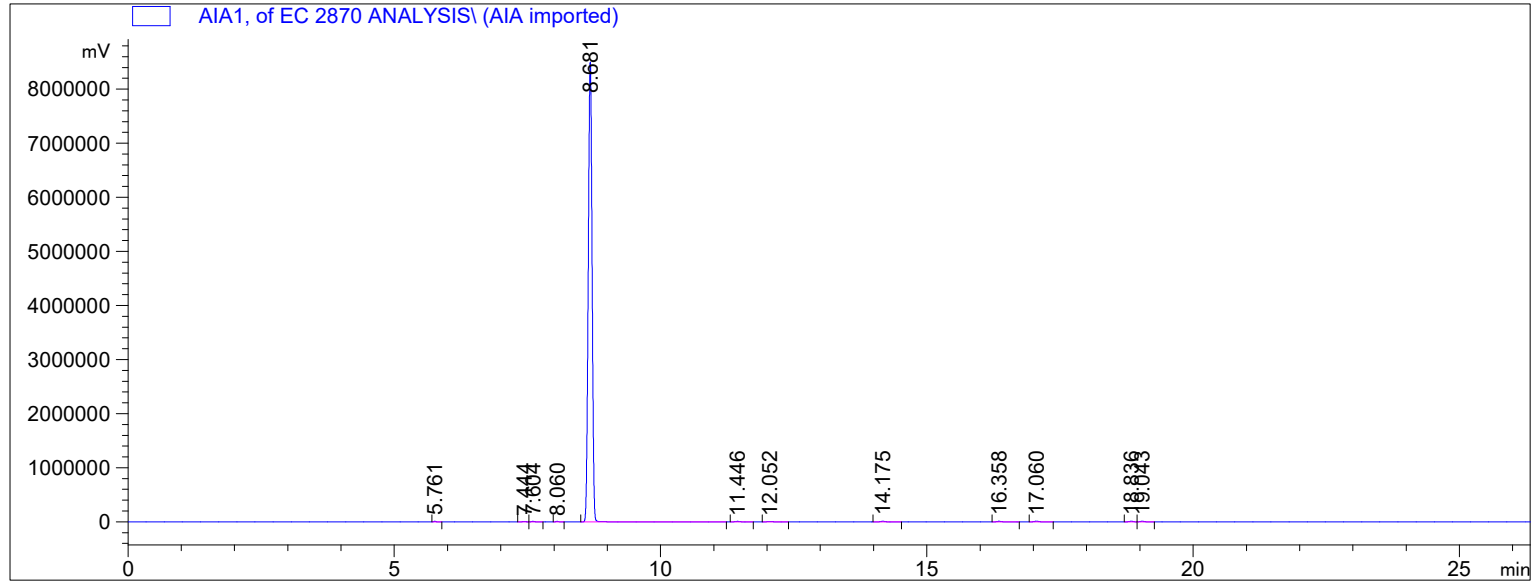
1 Warnings or Errors :

Warning : Calibration warnings (see calibration table listing)

=====
 *** End of Report ***

Sample Name:

```
=====
Acq. Operator   : lida
Location       : Vial 1
Injection Date  : 22.02.2022 3:21:00
Acq. Method    :
Analysis Method : C:\CHEM32\1\METHODS\VALIDATION.M
Last changed   : 21.09.2022 14:15:41
=====
```



Area Percent Report

```
Sorted By           : Signal
Calib. Data Modified : 21 September 2022 r. 14:13:16
Multiplier          : 1.0000
Dilution            : 1.0000
Use Multiplier & Dilution Factor with ISTDs
```

Signal 1: AIA1,

Peak #	RetTime [min]	Type	Width [min]	Area [mV*s]	Area %	Name
1	5.761	BB	5.78e-4	1.45635e4	0.05106	acetaldehyde
2	7.444	BB	9.22e-4	1.68297e4	0.05901	ethyl acetate
3	7.604	BB	9.00e-4	1.98706e4	0.06967	acetal
4	8.060	BB	7.44e-4	1.54689e4	0.05423	methanol
5	8.681	BB I	1.33e-3	2.82319e7	98.98205	ethanol
6	11.446	BB	1.38e-3	2.86296e4	0.10038	butan-2-ol
7	12.052	BB	1.39e-3	2.72312e4	0.09547	propan-1-ol
8	14.175	BB	1.33e-3	3.30069e4	0.11572	2-methylpropan-1-ol
9	16.358	BB	1.28e-3	2.99144e4	0.10488	butan-1-ol
10	17.060	BB I	1.37e-3	3.93141e4	0.13784	4-methylpentan-2-ol
11	18.836	BB	1.29e-3	3.30542e4	0.11589	2-methylbutan-1-ol
12	19.043	BB	1.29e-3	3.24592e4	0.11380	3-methylbutan-1-ol

Totals : 2.85223e7 100.0000

1 Warnings or Errors :

Warning : Calibration warnings (see calibration table listing)

*** End of Report ***

Sample Name:

Acq. Operator : lida

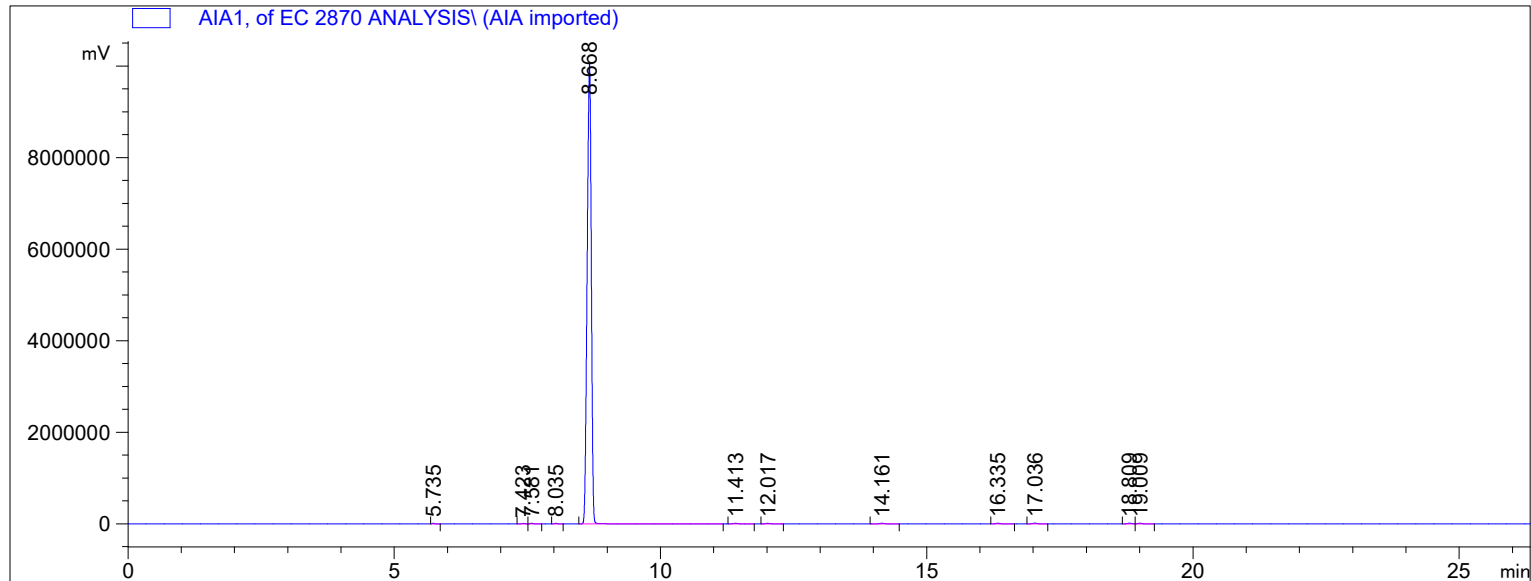
Location : Vial 2

Injection Date : 22.02.2022 16:19:22

Acq. Method :

Analysis Method : C:\CHEM32\1\METHODS\VALIDATION.M

Last changed : 21.09.2022 14:15:41



=====
 Area Percent Report
 =====

Sorted By : Signal
 Calib. Data Modified : 21 September 2022 r. 14:13:16
 Multiplier : 1.0000
 Dilution : 1.0000
 Use Multiplier & Dilution Factor with ISTDs

Signal 1: AIA1,

Peak #	RetTime [min]	Type	Width [min]	Area [mV*s]	Area %	Name
1	5.735	BB	5.33e-4	1.85769e4	0.05104	acetaldehyde
2	7.423	BB	9.11e-4	2.15170e4	0.05912	ethyl acetate
3	7.581	BB	8.78e-4	2.53513e4	0.06965	acetal
4	8.035	BB	7.33e-4	1.96470e4	0.05398	methanol
5	8.668	BB I	1.44e-3	3.60248e7	98.97926	ethanol
6	11.413	BB	1.37e-3	3.67904e4	0.10108	butan-2-ol
7	12.017	BB	1.34e-3	3.50323e4	0.09625	propan-1-ol
8	14.161	BB	1.32e-3	4.20937e4	0.11565	2-methylpropan-1-ol
9	16.335	BB	1.28e-3	3.85484e4	0.10591	butan-1-ol
10	17.036	BB I	1.36e-3	4.96540e4	0.13643	4-methylpentan-2-ol
11	18.809	BB	1.28e-3	4.25122e4	0.11680	2-methylbutan-1-ol
12	19.009	BB	1.28e-3	4.17886e4	0.11482	3-methylbutan-1-ol

Totals : 3.63963e7 100.0000

1 Warnings or Errors :

Warning : Calibration warnings (see calibration table listing)

=====
 *** End of Report ***

Sample Name:

Acq. Operator : lida

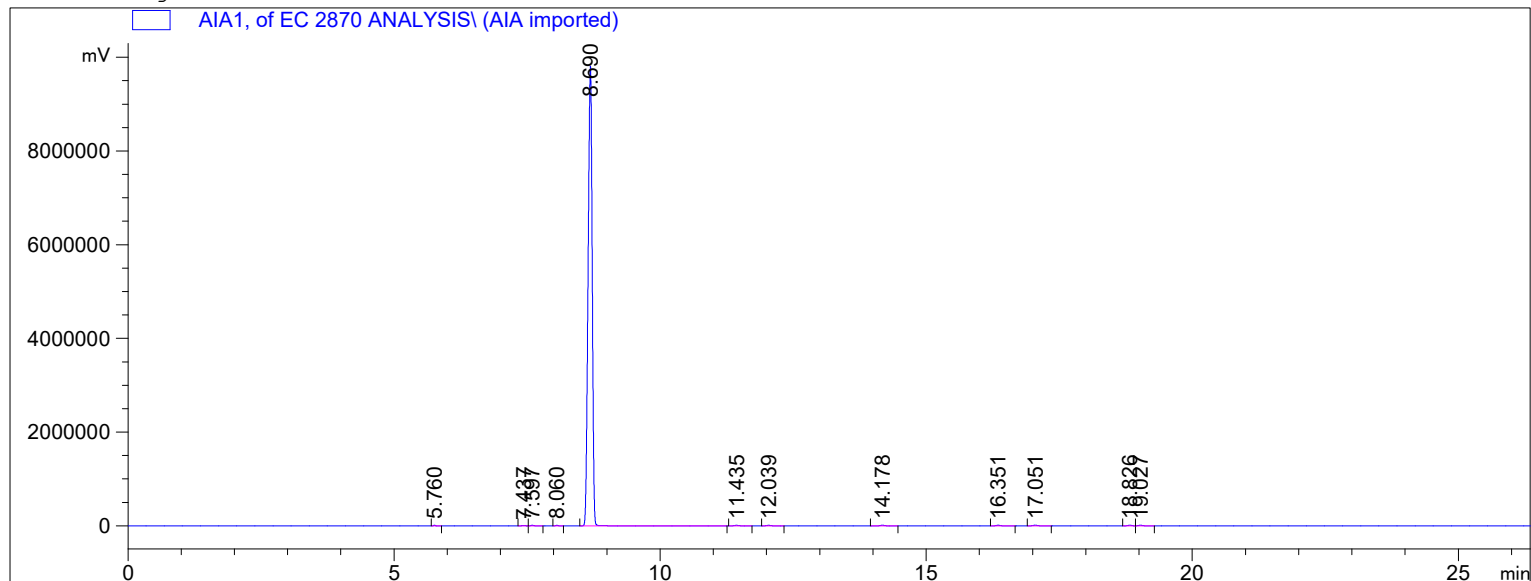
Location : Vial 2

Injection Date : 22.02.2022 16:52:02

Acq. Method :

Analysis Method : C:\CHEM32\1\METHODS\VALIDATION.M

Last changed : 21.09.2022 14:15:41



=====
 Area Percent Report
 =====

Sorted By : Signal
 Calib. Data Modified : 21 September 2022 r. 14:13:16
 Multiplier : 1.0000
 Dilution : 1.0000
 Use Multiplier & Dilution Factor with ISTDs

Signal 1: AIA1,

Peak #	RetTime [min]	Type	Width [min]	Area [mV*s]	Area %	Name
1	5.760	BB	5.33e-4	1.79352e4	0.05087	acetaldehyde
2	7.437	BB	9.22e-4	2.08704e4	0.05920	ethyl acetate
3	7.597	BB	8.89e-4	2.42460e4	0.06877	acetal
4	8.060	BB	7.22e-4	1.92527e4	0.05461	methanol
5	8.690	BB I	1.43e-3	3.48968e7	98.98044	ethanol
6	11.435	BB	1.34e-3	3.54702e4	0.10061	butan-2-ol
7	12.039	BB	1.33e-3	3.39142e4	0.09619	propan-1-ol
8	14.178	BB	1.32e-3	4.07137e4	0.11548	2-methylpropan-1-ol
9	16.351	BB	1.28e-3	3.73524e4	0.10595	butan-1-ol
10	17.051	BB I	1.38e-3	4.80705e4	0.13635	4-methylpentan-2-ol
11	18.826	BB	1.28e-3	4.11701e4	0.11677	2-methylbutan-1-ol
12	19.027	BB	1.28e-3	4.04646e4	0.11477	3-methylbutan-1-ol

Totals : 3.52562e7 100.0000

1 Warnings or Errors :

Warning : Calibration warnings (see calibration table listing)

=====
 *** End of Report ***

Sample Name:

Acq. Operator : lida

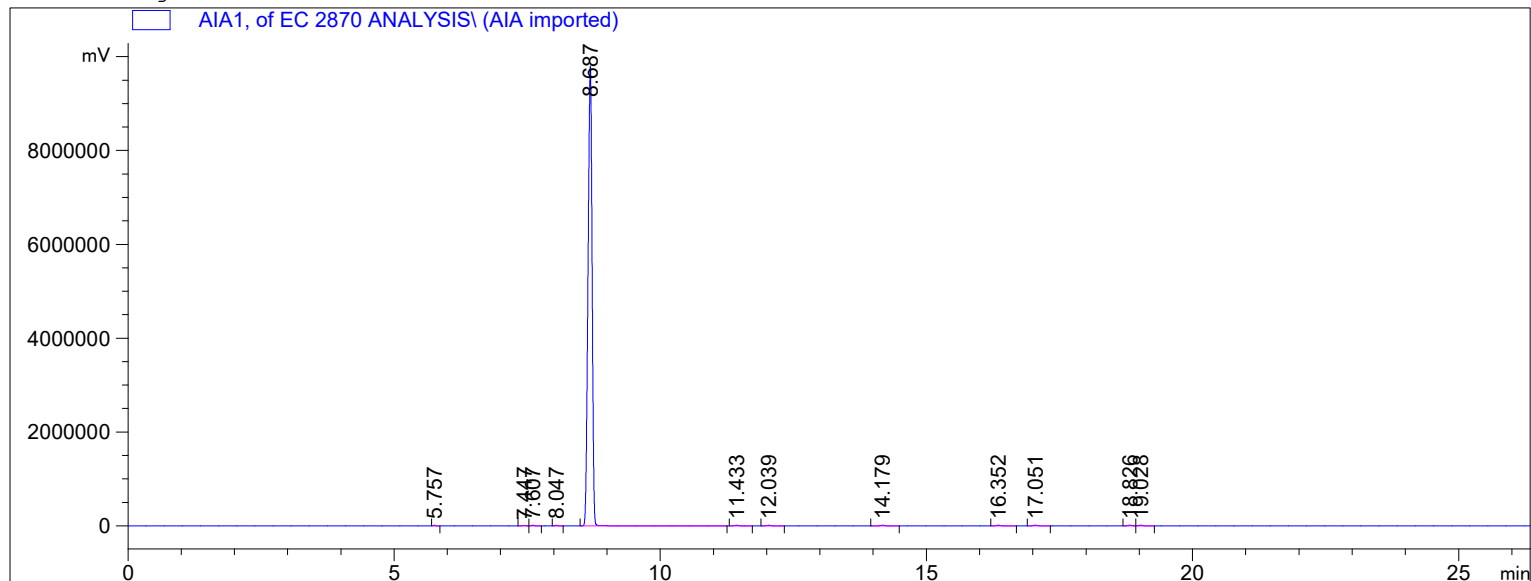
Location : Vial 2

Injection Date : 22.02.2022 17:24:40

Acq. Method :

Analysis Method : C:\CHEM32\1\METHODS\VALIDATION.M

Last changed : 21.09.2022 14:15:41



=====
 Area Percent Report
 =====

Sorted By : Signal
 Calib. Data Modified : 21 September 2022 r. 14:13:16
 Multiplier : 1.0000
 Dilution : 1.0000
 Use Multiplier & Dilution Factor with ISTDs

Signal 1: AIA1,

Peak #	RetTime [min]	Type	Width [min]	Area [mV*s]	Area %	Name
1	5.757	BB	5.33e-4	1.79844e4	0.05109	acetaldehyde
2	7.447	BB	9.22e-4	2.06203e4	0.05858	ethyl acetate
3	7.607	BB	8.89e-4	2.43982e4	0.06931	acetal
4	8.047	BB	7.33e-4	1.91044e4	0.05427	methanol
5	8.687	BB I	1.43e-3	3.48414e7	98.98101	ethanol
6	11.433	BB	1.34e-3	3.53962e4	0.10056	butan-2-ol
7	12.039	BB	1.34e-3	3.38887e4	0.09627	propan-1-ol
8	14.179	BB	1.32e-3	4.06085e4	0.11536	2-methylpropan-1-ol
9	16.352	BB	1.28e-3	3.73585e4	0.10613	butan-1-ol
10	17.051	BB I	1.37e-3	4.78783e4	0.13602	4-methylpentan-2-ol
11	18.826	BB	1.27e-3	4.10832e4	0.11671	2-methylbutan-1-ol
12	19.028	BB	1.27e-3	4.03666e4	0.11468	3-methylbutan-1-ol

Totals : 3.52001e7 100.0000

1 Warnings or Errors :

Warning : Calibration warnings (see calibration table listing)

=====
 *** End of Report ***