

Sample Name:

Acq. Operator : lida

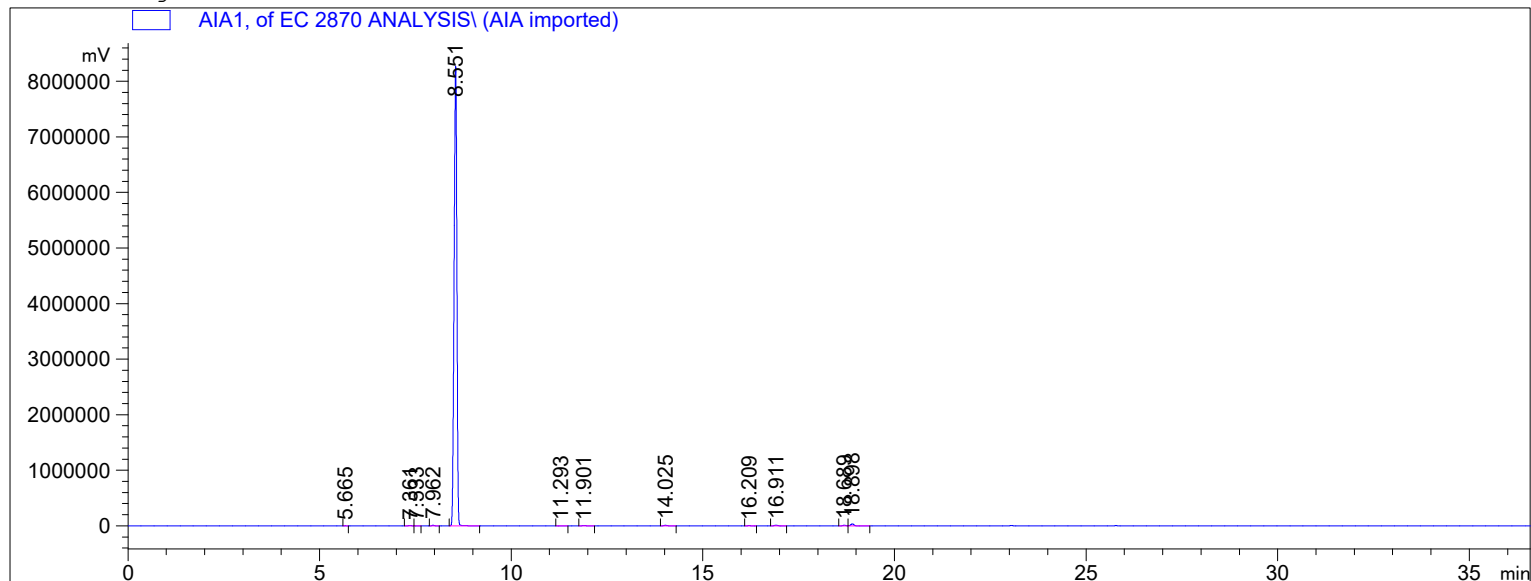
Location : Vial 1

Injection Date : 23.02.2022 20:26:47

Acq. Method :

Analysis Method : C:\CHEM32\1\METHODS\VALIDATION.M

Last changed : 21.09.2022 14:15:41



Sorted By : Signal
 Calib. Data Modified : 21 September 2022 r. 14:13:16
 Multiplier : 1.0000
 Dilution : 1.0000
 Use Multiplier & Dilution Factor with ISTDs

Signal 1: AIA1,

Peak #	RetTime [min]	Type	Width [min]	Area [mV*s]	Area %	Name
1	5.665	BB	5.89e-4	2435.52051	0.00865	acetaldehyde
2	7.361	BB	9.56e-4	1.79498e4	0.06377	ethyl acetate
3	7.533	BB	9.44e-4	3274.98389	0.01163	acetal
4	7.962	BB	9.11e-4	2.59139e4	0.09206	methanol
5	8.551	BB I	1.34e-3	2.78386e7	98.90118	ethanol
6	11.293	BB	1.39e-3	3148.82007	0.01119	butan-2-ol
7	11.901	BB	1.39e-3	1.58573e4	0.05634	propan-1-ol
8	14.025	BB	1.33e-3	3.16382e4	0.11240	2-methylpropan-1-ol
9	16.209	BB	1.30e-3	8325.71289	0.02958	butan-1-ol
10	16.911	BB I	1.38e-3	4.10683e4	0.14590	4-methylpentan-2-ol
11	18.689	BB	1.23e-3	3.46317e4	0.12303	3-methylbutan-1-ol
12	18.898	BB	1.40e-3	1.25050e5	0.44426	2-methylbutan-1-ol

Totals : 2.81479e7 100.0000

2 Warnings or Errors :

Warning : Calibration warnings (see calibration table listing)

Warning : Elution order of calibrated compounds may have changed

Sample Name:

Acq. Operator : lida

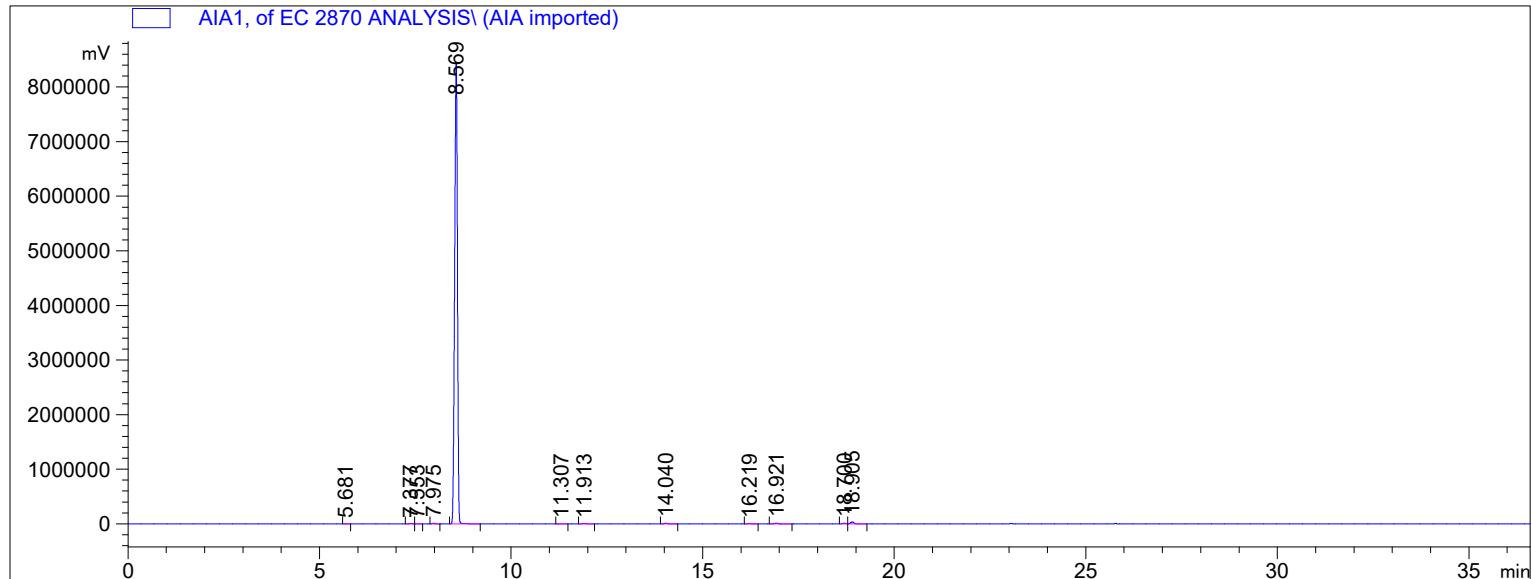
Location : Vial 1

Injection Date : 23.02.2022 21:09:44

Acq. Method :

Analysis Method : C:\CHEM32\1\METHODS\VALIDATION.M

Last changed : 21.09.2022 14:15:41



=====
 Area Percent Report
 =====

Sorted By : Signal
 Calib. Data Modified : 21 September 2022 r. 14:13:16
 Multiplier : 1.0000
 Dilution : 1.0000
 Use Multiplier & Dilution Factor with ISTDs

Signal 1: AIA1,

Peak #	RetTime [min]	Type	Width [min]	Area [mV*s]	Area %	Name
1	5.681	BB	5.78e-4	2521.61694	0.00876	acetaldehyde
2	7.377	BB	9.67e-4	1.86338e4	0.06471	ethyl acetate
3	7.553	BB	9.67e-4	3409.81958	0.01184	acetal
4	7.975	BB	9.11e-4	2.64521e4	0.09186	methanol
5	8.569	BB I	1.37e-3	2.84810e7	98.90055	ethanol
6	11.307	BB	1.39e-3	3223.63306	0.01119	butan-2-ol
7	11.913	BB	1.39e-3	1.62109e4	0.05629	propan-1-ol
8	14.040	BB	1.34e-3	3.24476e4	0.11267	2-methylpropan-1-ol
9	16.219	BB	1.29e-3	8547.83984	0.02968	butan-1-ol
10	16.921	BB I	1.39e-3	4.22872e4	0.14684	4-methylpentan-2-ol
11	18.700	BB	1.23e-3	3.53216e4	0.12265	3-methylbutan-1-ol
12	18.905	BB	1.40e-3	1.27561e5	0.44296	2-methylbutan-1-ol

Totals : 2.87977e7 100.0000

2 Warnings or Errors :

Warning : Calibration warnings (see calibration table listing)

Warning : Elution order of calibrated compounds may have changed

Sample Name:

Acq. Operator : lida

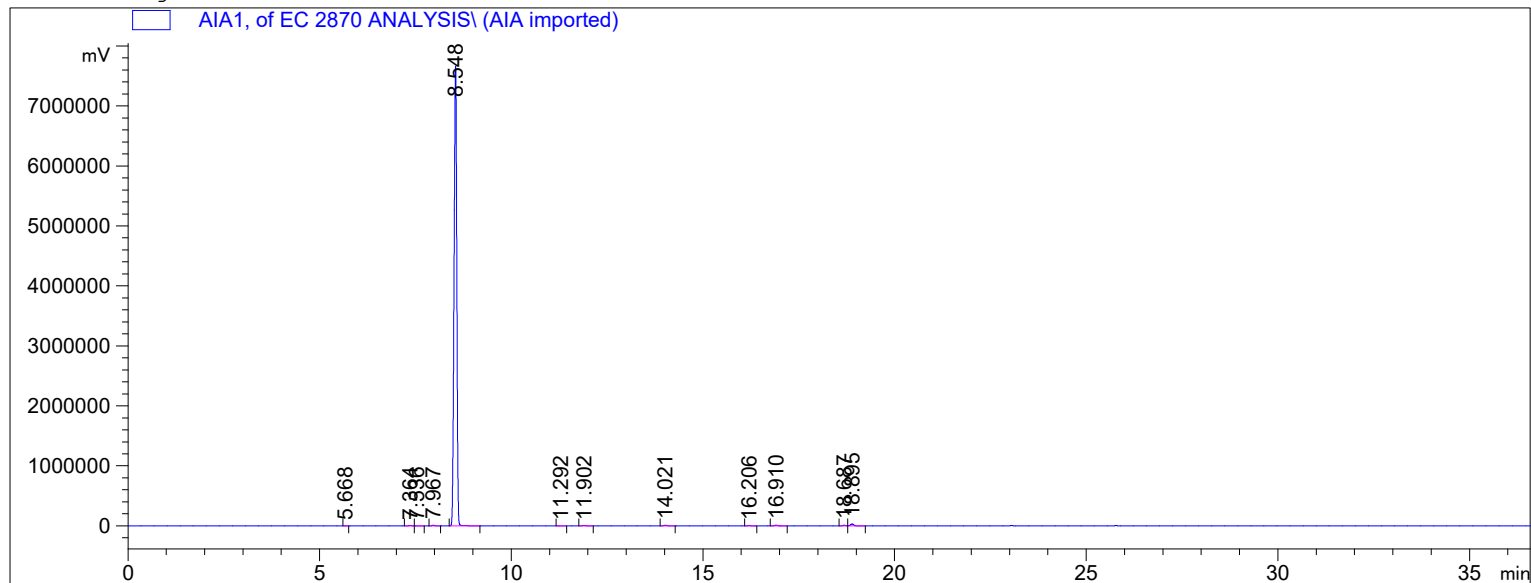
Location : Vial 1

Injection Date : 23.02.2022 21:52:41

Acq. Method :

Analysis Method : C:\CHEM32\1\METHODS\VALIDATION.M

Last changed : 21.09.2022 14:15:41



=====
 Area Percent Report
 =====

Sorted By : Signal
 Calib. Data Modified : 21 September 2022 r. 14:13:16
 Multiplier : 1.0000
 Dilution : 1.0000
 Use Multiplier & Dilution Factor with ISTDs

Signal 1: AIA1,

Peak #	RetTime [min]	Type	Width [min]	Area [mV*s]	Area %	Name
1	5.668	BB	6.22e-4	2265.14478	0.00884	acetaldehyde
2	7.364	BB	9.67e-4	1.64968e4	0.06440	ethyl acetate
3	7.536	BB	9.44e-4	3162.88428	0.01235	acetal
4	7.967	BB	9.56e-4	2.36178e4	0.09220	methanol
5	8.548	BB I	1.32e-3	2.53340e7	98.90509	ethanol
6	11.292	BB	1.42e-3	2822.17432	0.01102	butan-2-ol
7	11.902	BB	1.43e-3	1.43305e4	0.05595	propan-1-ol
8	14.021	BB	1.34e-3	2.86734e4	0.11194	2-methylpropan-1-ol
9	16.206	BB	1.30e-3	7539.47314	0.02943	butan-1-ol
10	16.910	BB I	1.38e-3	3.73560e4	0.14584	4-methylpentan-2-ol
11	18.687	BB	1.24e-3	3.13069e4	0.12222	3-methylbutan-1-ol
12	18.895	BB	1.39e-3	1.12885e5	0.44071	2-methylbutan-1-ol

Totals : 2.56145e7 100.0000

2 Warnings or Errors :

Warning : Calibration warnings (see calibration table listing)

Warning : Elution order of calibrated compounds may have changed