

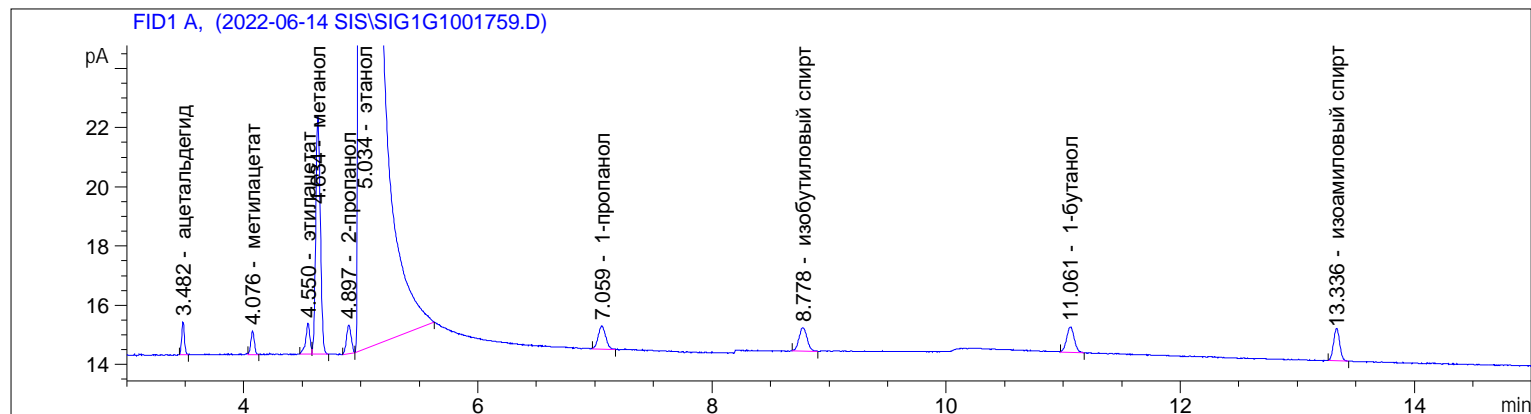
Sample Name: 2

```

=====
Acq. Operator   :
Acq. Instrument : Instrument 1                Location : Vial 101
Injection Date  : 14.06.2022 15:19:06      Inj      : 1
                                           Inj Volume : 1 µl

Acq. Method     : D:\CHEM32\1\METHODS\VODKA_2019.M
Last changed    : 08.06.2022 14:22:28
Analysis Method  : C:\CHEM32\1\DATA\2022-06-14 SIS\SIG1G1001752.D\RUN.M
Last changed    : 20.06.2022 14:30:13
Method Info     : 25.06.2019 H2
=====

```



```

=====
External Standard Report
=====

```

```

Sorted By           : Signal
Calib. Data Modified : 20.06.2022 14:28:58
Multiplier:         : 1.0000
Dilution:           : 1.0000
Use Multiplier & Dilution Factor with ISTDs

```

Signal 1: FID1 A,

RetTime [min]	Type	Area [pA*s]	Amt/Area	Amount [мг/дм3]	Grp	Name
3.482	BB	1.84653	2.29312	4.23431		ацетальдегид
4.076	BB	1.60546	2.62726	4.21796		метилацетат
4.550	BV	2.68553	1.55917	4.18720		этилацетат
4.634	VB	22.04287	2.26991e-4	5.00354e-3		метанол
4.897	BV	2.66154	1.50399	4.00292		2-пропанол
5.034	VB S	1.92767e5	1.98117e-4	38.19041		этанол
7.059	BB	3.45941	1.10088	3.80839		1-пропанол
8.778	BB	3.78041	1.00230	3.78909		изобутиловый спирт
11.061	BB	3.85842	1.00560	3.88004		1-бутанол
13.336	BB	4.01742	9.73467e-1	3.91082		изоамиловый спирт

```
Totals : 70.22614
```

1 Warnings or Errors :

Warning : Calibration warnings (see calibration table listing)

Sample Name: 2

=====

*** End of Report ***